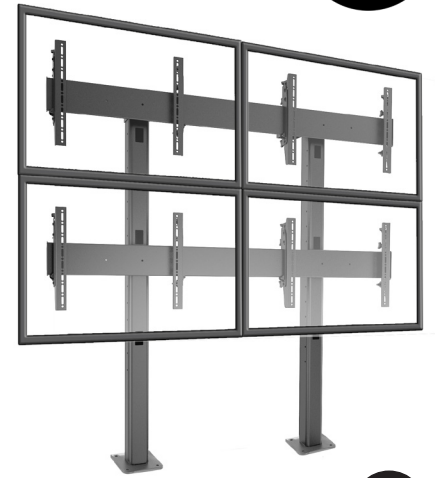


FUSION™ 2 X 2 MICRO-ADJUSTABLE LARGE BOLT-DOWN FREESTANDING VIDEO WALL



Certifications	UL Listed
Center of Display to Floor/Table Range	416 mm (minimum bottom row) - 1635 mm (maximum top row)
Color	Black
Lateral Shift	Yes
Manual Height Adjustment	Micro-adjustment up to 19 mm per display
Mounting Pattern Compatibility (Universal Versions)	any width x 100 mm - 400 mm
Orientation	Landscape
Overall Dimensions (HxWxD)	1692 x 1851 x 239 mm
Plumb Adjustment	Micro-adjustment up to 19 mm
Screen Array Configuration	2 x 2
Shipping Weight	80 kg
Solution Type	Universal
Typical Screen Sizes*	42 - 50" (Larger displays possible with FCAX extenders, use MountFinder to confirm compatibility)
Weight Capacity	56.7 kg per screen



Color option:



*Always check compatibility with the Chief mountfinder on the Chief website.

SPECIFICATIONS

- 2 x 2 screen bolt down floor configuration for 42 - 60" screens.
- Mount provides 6 adjustment knobs per display to adjust height, plumb and lateral shift
- Heavy duty floor mounting hardware included
- Integrated cable management for a clean installation
- Casters can optionally be replaced by leveling feet
- Mounting bracket include center display markings for each display row
- Quick On/off display connection system of the display with integrated security option
- Compatible with AV storage options for cables, Digital Media Players and power outlets.
- Available in version for portrait display mounting
- Portrait Display mounting option available (LBM2X2UP)
- VESA compatible: any width x 100 - 400 mm
- Overall Dimensions (HxWxD): 1692 x 1851 x 239 mm
- Weight capacity: 56.7 kg per display
- Color: Black
- Certifications: UL

RECOMMENDED ACCESSORIES



FCAX extenders

FUSION™ Extension Brackets to install larger displays and displays with wider mounting patterns.



LBM extenders**

FCABX - Fusion LBM Video Wall Height Extenders to safely raise the height of the lowest display row

**please check website for compatibility



FCA520

Fusion™ Universal clamp kit to attach media players or power strips to the back of flat panel displays



FCA811

35 cm wide shelf sits above or below display to hold AV components



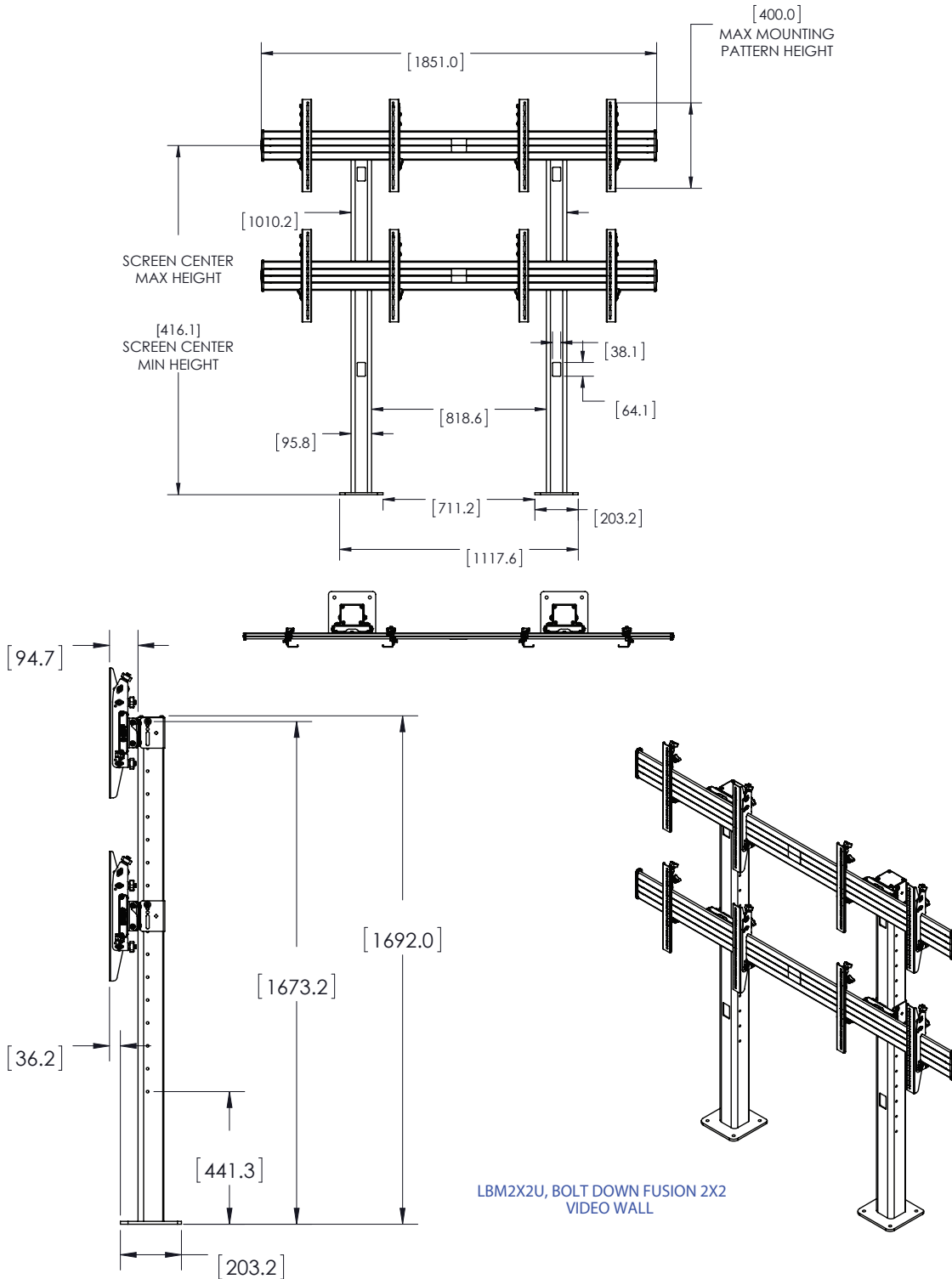
LBM2x2U

CAD DRAWINGS / DESIGN ESSENTIALS

CAD Drawings, installation instructions, BIM files are online available at www.chiefmfg.com/design.

TECHNICAL DRAWINGS

Dimensions in mm.



A BRAND OF MILESTONE AV TECHNOLOGIES - www.chiefmfg.com

USA P 800.582.6480 / +1.952.225.6000 - F 877.894.6918 / +1.952.894.6918 - chief@chiefmfg.com
 Canada P 877.345.4329 - F 888.377.5314 - canadainfo@milestone.com
 EMEA P +31 495 580 840 - F +31 495 580 845 - emea.sales@milestone.com
 Asia Pacific P +852 2145 4099 - F +852 2145 4477 - asia.chief@milestone.com

