



CMX20T

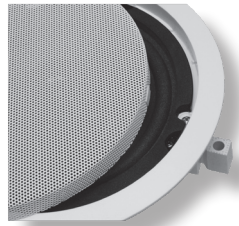
Technical Specifications

- Type : 2 - Way HiFi Pro
- Woofer : 8" Enforced Polypropylen
- Tweeter : 1" Silk Dome
- Rated Power RMS : 20 W / 100Volt
- Music Power RMS : 32 W / 100Volt
- Rated Power RMS : 60 W / 16Ω
- Music Power RMS : 100 W / 16Ω
- Sound Pres. Level (SPL) 1W/1M : 93dB
- Frequency range : 50 Hz - 20 kHz
- Trafo Power Tappings : 20 - 10 - 5 - 2.5W
- Dispersion @ 1-4-8 KHz : 180° - 80° - 45°
- Dimensions outside Ø : 244MM
- Dimensions Cutout Ø : 220MM
- Depth : 90MM
- Weight : 1.75Kg

Power Tappings

The APart CMX20T 2-way built-in loudspeaker can be used as a 16 Ohm or 100 Volt loudspeaker. In 16 Ohm use, you can connect up to 4 loudspeakers in parallel on each channel of a standard 4 Ohm amplifier. For 100 use, the CMX20T is equipped with a high-quality 20 Watt 100 Volt transformer with several power tappings. Therefore it can be used with high ceilings or places where more back ground noise is present. The loudspeaker has a 8" enforced Polypropylen woofer what results in a very low distortion. To complete the sound a 1" tweeter has been integrated. It makes the CMX20T very suitable for the distribution of microphone calls and back ground music. The housing is made of high quality ABS. The woofer is made out of enforced polypropylen, what makes it moisture-proof. The standard colour is white. From 12 pieces on, the loudspeakers can be painted optionally in any other RAL colour

Mounting the loudspeaker



The loudspeaker is easy to install, due to its simple, quick mounting system 3 screws which are hidden behind the loudspeaker grill, what gives the loudspeaker a modern and striking design.

Cutout Ø : 220 MM

Remove the grill before mounting.

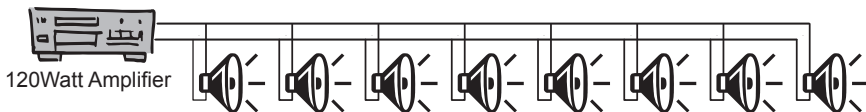
You can see four Philips head screws.

Use these screws to thighten the dog-ears.

COLOUR	KLEUR	COULEUR	POWER	IMPEDANCE
Black	Zwart	Noir	Common	
RED	ROOD	ROUGE	2.5 Watt	4KΩ
GREEN	GROEN	VERT	5 Watt	2KΩ
YELLOW	GEEL	JAUNE	10 Watt	1KΩ
BROWN	BRUIN	BRUN	20 Watt	500R

100 Volt Technology

$$70 \text{ Watt} = 20 + 20 + 10 + 5 + 5 + 5 + 2.5 + 2.5$$



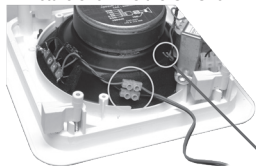
Amplifier power must be higher than total power of all speakers.

Het versterkervermogen moet hoger zijn dan de som van de vermogens van de luidsprekers.

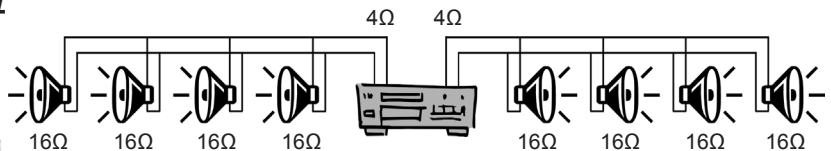
La puissance de l'amplificateur doit être plus élevée que la puissance totale des haut parleurs.

16 ohm Technology

Picture shown is the CMS20T



16 ohm connection



Disconnect 100Volt transformer