

Inside the packaging you will find:



- pz. 02 aluminium pieces without holes for upwards and bottom parts of the frame



- pz. 02 aluminium pieces with holes for left and right parts of the frame



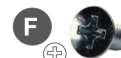
- pz. 02 iron brackets for fixing the threaded rods
(Note: The threaded rods are NOT included)



- pz. 04 aluminium angle bars

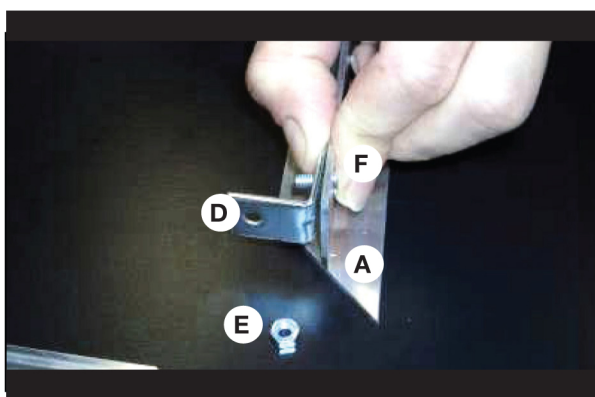


- pz. 16 nuts M4



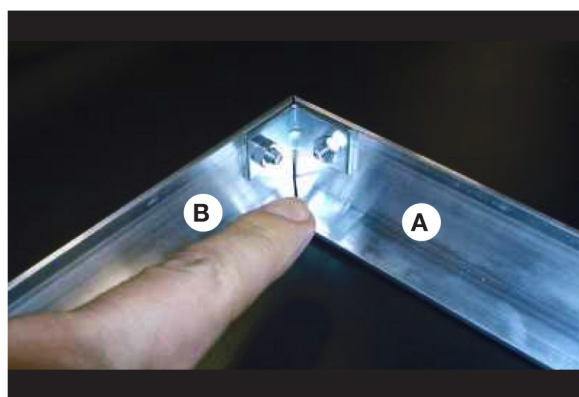
- pz. 16 flush-head bolts 4X10 mm.

STEP 1



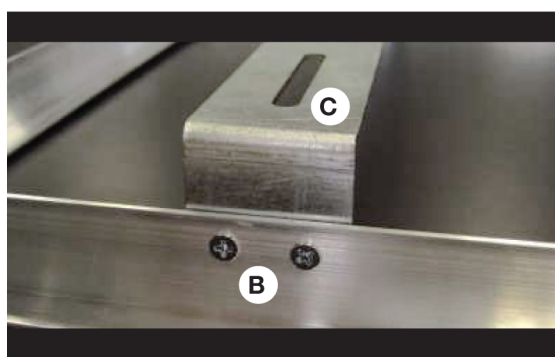
Mount the frame, fixing the four aluminium profiles by the four angle bars with bolts and nuts supplied (the nuts should be facing the internal part of the frame)

STEP 2

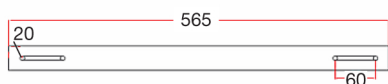


The final result should be like the picture above, for every edge of the frame.

STEP 3



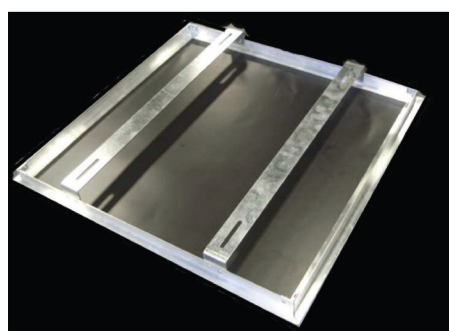
After that, mount the two iron brackets for the threaded rods using the proper holes that you find on the aluminium profile. (you will find the threaded rods inside the packaging of projector lift SI-100 or SI-200)



MEASURES
BRACKETS
for the threaded
rods (in mm.)

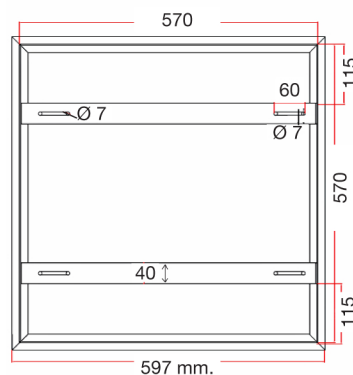


STEP 4



The final result should be like the picture on the left. After trimmed the tile of the false ceiling, put it inside the holder.

Measures of the tile:
564x564 mm.



MEASURES
of the tile
holder (in mm.)