



Installation Guide

celexon screen Tripod Economy



- Easy to assemble
- Portable
- Universal usage

Thank you for purchasing a celexon product. Please read the installation instructions carefully before using the screen.

Thank you for purchasing a celexon product.

Please read the installation instructions carefully before using the screen.

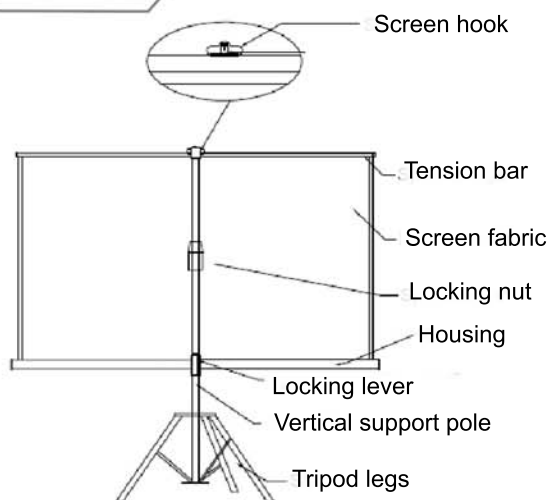
Advice

1. Do not touch the fabric when extending and retracting the screen.
2. Do not place the screen on an uneven or unstable surface. Be cautious when children are in the room.
3. Do not use the screen for anything outside of its intended purpose.

Care instructions

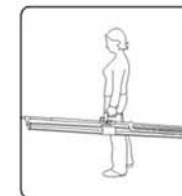
1. Do not use or store the screen in direct sunlight.
2. Keep the fabric free from dirt or dust particles as this may impact the projection result. If the fabric requires cleaning, use lukewarm soap water.
3. Do not use any acidic cleaning products on the fabric – this could damage the fabric permanently.

Description

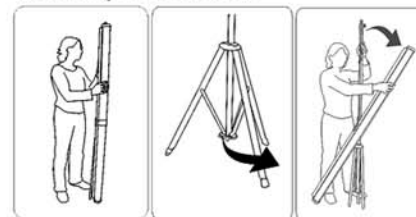


Operating instructions

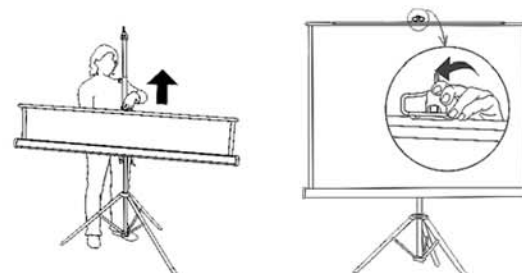
To transport the screen, use the carrying handle.



To set up the screen:



1. Position the screen vertically on its tripod legs.
2. Pull the tripod legs apart as far as possible.
3. Rotate the housing by 90° so that it is horizontal and the fabric can be pulled out. Release the locking lever on the handle and lower the housing to an appropriate height, then secure the locking lever again.
4. Pull the fabric out of its housing and hook it over the screen hook.
5. Untighten the locking nut on the support pole and adjust the screen to the desired height. Then tighten the locking nut again.



6. Use the integrated keystone bracket (on top of pole) if you wish to position the screen at an angle

To dismantle the screen

1. Use the handle on the top rail to lower the screen fabric into its housing. Do not let go of the handle until the fabric is fully retracted.
2. Loosen the locking nut on the pole and retract it to its original length. Carefully tighten the locking nut again.
3. Release the locking lever on the carrying handle and move the housing back to its original position, then secure the locking lever again.
4. Rotate the housing 90° so that it is in the vertical position.
5. Fold up the tripod legs.