

SHARP

PN-LB863
PN-LB753
PN-LB653

AQUOS BOARD® Interactive Display Systems



AQUOS BOARD®

4K
3840 × 2160 Pixels

Next-Level Collaboration Made Simple

The PN-LB3 AQUOS BOARD® line-up of interactive displays available in 65", 75" and 86" class sizes, are designed to elevate collaboration across corporate, education, and digital signage environments. Enterprise Devices Licensing Agreement (EDLA) certified for seamless access to Google services, these displays feature intuitive touch performance and built-in wireless casting, making it easy to share, present and engage without cables. Whether in a classroom, boardroom, or public space, they deliver a powerful, all-in-one solution for communication and creativity.



Built-in Apps

The PN-LB3 series adapt easily for busy office environments, meeting rooms and classrooms that require quick, responsive operation and smart, integrated collaboration tools. It encourages effective group teamwork, promotes idea sharing and helps people deliver great presentations and achieve better meeting outcomes.



EDLA certification enables the PN-LB3 series to have full access to tools like Google Classroom and the Google Play Store. With EDLA certification each AQUOS BOARD Interactive display will receive regular security updates, can be managed centrally by school IT departments and work consistently across all classrooms.

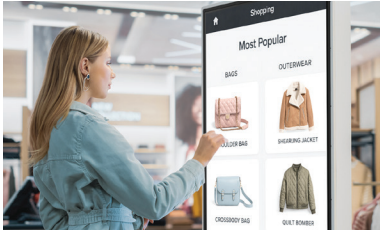
See Every Little Detail

To ensure that groups can collaborate more effectively in corporate environments, everything needs to be displayed clearly and precisely. It helps people absorb information more easily, so they stay focused and engaged and can contribute more proactively. The PN-LB3 AQUOS BOARD range of large format interactive displays is available with a choice of 86" class (85.6" diagonal), 75" (74.5" diagonal), and 65" (64.5" diagonal) screen sizes to suit almost any office environment, boardroom or meeting room.

It also delivers a true 4K reading and writing experience as it features a 3840 x 2160 Ultra High Definition (UHD) 4K resolution display and touchscreen. The LCD technology delivers high contrast and visual clarity, ensuring that even the most detailed presentations, documents and diagrams can be easily viewed and read. So it is ideal for exploring very detailed data and technical designs, particularly within businesses operating in the finance, engineering, architecture, healthcare, consulting, energy and retail markets.

All the flexibility you need

The ability to adapt to changing requirements quickly and effectively is essential to ensuring that businesses always operate with maximum productivity and efficiency.



The open architecture design of the Sharp PN-LB3 AQUOS BOARD Interactive display provides exceptional flexibility and freedom of use, so it can meet the demands of even the most challenging corporate environments. You can easily connect to various types of PC sources with its USB-C and HDMI connectors. This allows you to display almost any type of content with a 4K resolution, or select any type of 4K video content from a media player using the CEC HDMI input. In addition, it has the latest high-speed, high-bandwidth USB-C port, which can be used for multiple functions and has a rotationally symmetrical design, so there is no connection confusion.

The 65" and 75" AQUOS BOARD displays can also be installed in landscape or portrait mode, providing the ideal solution for interactive digital signage and wayfinding applications. The 65" model can be tilted upwards up to 20 degrees for easy installation in a kiosk.

Its versatile connectivity ensures that you can easily create the optimum conditions to encourage creativity, boost productivity and enable effective decision making, without being hampered by any unnecessary technical complexity.

Added Productivity as Standard

The PN-LB3 AQUOS BOARD interactive displays come with a range of standard software to help get the most out of your meetings or presentations. They are easy to install and use, and do not require any technical expertise.

- **Pen Software**

Provides quick and easy access to pen settings and other useful functions. It allows you to add onscreen annotations or graphics directly onto photos, videos, PDFs and common Microsoft® files. Users can also control presentations, adjust screen settings and store or email files they've been working on.

- **eShare App**

Supports multifaceted wireless casting*, so content on the screen, including images, audio and video, can be shared simultaneously with multiple other devices. No cables are required, so there is no stress, hassle or delay in sharing information.

* Compatible with Windows®, Android™, iOS®, macOS®, iPadOS®, Chrome™ OS

- **Startup Wizard**

An easy-to-use startup wizard provides quick access to multiple home screens. The user interface can be quickly configured to match the installation environment. Selections include Meeting Room, Classroom, or Touch Signage to customize the display for efficient operation.

- **Applications to Energize the Classroom**

The PN-LB3 AQUOS BOARD interactive displays include a built-in whiteboard app with easy to use annotation tools. Additionally, screen recorder, timer, web browser, PDF viewer and voting apps make it easy for teachers to actively engage students for more effective lessons.

Simply Smarter Meetings

Successful collaboration can be realized in simply smarter meetings where everyone can have a great experience, no matter where the individuals may be. That means making it easy to share their best ideas by removing the tech hassles for both laptop and mobile users. By integrating Sharp Synappx™ GO with the PN-LB863, PN-LB753 and PN-LB653, users can not only share their best ideas, but can do so easily and quickly.

Key Features

- Connecting and ending meetings are easy to do, whether in a web conference session or in a shared space with connection to in-room meeting tech.
- No more rummaging for meeting content. Access and share your best ideas by quickly pulling up meeting content and sharing it with everyone in the meeting, whether they are in the room or attending virtually.
- Mobile users can also control and share their files from their smartphone, just as they would from a laptop.



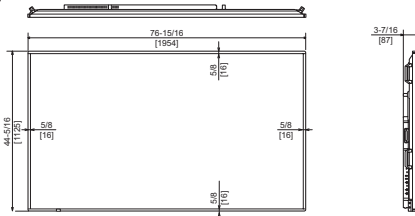
Specifications

Model Name	PN-LB863	PN-LB753	PN-LB653
Installation	Landscape/Portrait(for 65" and 75", counterclockwise)/Face-up 0-20 degrees (for 65")		
LCD Panel	86-inch-class (85-9/16 inch diagonal) TFT LCD	75-inch-class (74-1/2 inch diagonal) TFT LCD	65-inch-class (64-1/2 inch diagonal) TFT LCD
Max. Resolution	3,840 x 2,160 pixels		
Max. Display Colors (approx.)	1.07 billion colors (8bit +FRC)		
Pixel Pitch (H x V)	0.494 mm (H) x 0.494 mm (V)	0.430 mm (H) x 0.430 mm (V)	0.372 mm (H) x 0.372 mm (V)
Max. Brightness (standard value)*1	500 cd/m ²		
Contrast Ratio	1,200 : 1	1,500 : 1	
Viewing Angle (H/V)*2	178°/178° (CR >10)		
Active Screen Area (W x H) (approx.)	74-5/8" x 41-15/16"	64-15/16" x 36-9/16"	56-1/4" x 31-5/8"
Response Time	8 ms (grey to grey, avg.)		
Backlight	LED, direct lit		
Touchscreen	IR		
PC Connection Port	USB (2.0 compliant) (Type B 3.0 terminal) x 1		
Power Supply for touchpanel	Supplied from main unit		
Multi Touch	40 points		
Protection Glass	Thickness: Approx. 3.2 mm Shock resistance: 130 cm ^{*3}		
Touch Pen	passive pen		
Terminals*4	HDMI (HDCP2.3 compatible, CEC compatible, HDMI3 supports ARC) x 3 USB Type-C (DisplayPort 1.4 Alt mode, HDCP2.3, USB Power Delivery 100W compatible(65W with OPS installed), Touch signal, USB pass through) x 1		
Input	HDMI (HDCP2.3 compatible, mirroring displayed image and MST for Type-C input) x 1 *5, 3.5 mm-diameter mini stereo jack x 1		
Output	HDMI (HDCP2.3 compatible, mirroring displayed image and MST for Type-C input) x 1 *5, 3.5 mm-diameter mini stereo jack x 1		
System	USB 3.2 Gen1 TypeA x 1, USB 3.2 Gen1 TypeC x 2, USB 2.0 TypeA x2, Touch USB 2.0 (Type B 3.0 terminal) x 1, LAN port (10Base-T/100Base, TX/1000BASE-T) x 2, RS-232C x 1		
Expansion Slot	OPS Slot (18V, 3.6A)		
Speaker Output	15 W + 15 W		
Mounting	4 points, 800 x 600 mm pitch, M8 screw	4 points, 800 x 400 mm pitch, M8 screw	4 points, 600 x 400 mm pitch, M8 screw
Power Supply*6	100V - 240 V AC, 50/60 Hz		
Power Consumption (Factory Setting (Shipment) / Max rating)	245W / 510W	170W / 420W	140W / 370W
Environmental Conditions	Operating Temperature*7 41 °F to 95 °F (5 °C to 35 °C)		
	Operating Humidity*8 20% to 80% RH (no condensation)		
Dimensions (W x D x H) (approx.)	76.9" x 3.4" x 44.3"	67.2" x 3.4" x 33.9"	58.4" x 3.4" x 33.9"
Weight (approx.) excluding OPS	132.2 lbs.	105.8 lbs.	77.1 lbs.
Packaging Dimensions (W x D x H) (approx.)	84.05" x 7.28" x 49.01"	74.40" x 7.28" x 43.38"	65.74" x 7.28" x 38.58"
Packaging Weight (approx.)	160.9 lbs.	130.1 lbs.	99.2 lbs.
Bezel width	16 mm (Left, Right, Top, Bottom)		
Main Accessories	AC power cord, remote control unit, remote control unit battery (AAA size) x 2, set-up manual, Wireless adapter, Wireless Adapter anti-theft cover, blank sticker, cable clamp x 3, USB cable A-B 3m, touch pen x 2, Camera mount, STB mount		

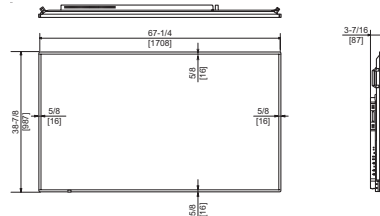
Design and specifications are subject to change without prior notice.

*1 Without Glass. Brightness depends on input mode and other picture settings. Brightness level will decrease slightly over the lifetime of the product. Due to the physical limitations of the equipment, it is not possible to maintain a precisely constant level of brightness. *2 Excluding the touch sensor part around the LCD panel. *3 Approximate distance at which the glass panel can withstand the impact of a 500-gram iron ball dropped on its center. *4 Use a commercially available connection cable for PC and other video connections. *5 MST supports output to only one device. Operation on all displays is not guaranteed. *6 The AC power cord is an inlet type. The cable is bundled (3 pins). *7 Temperature conditions may change when using the monitor together with the optional equipment. In such cases, check the temperature conditions specified by the optional equipment. *8 Check the requirements of the computer and other devices to be connected, and make sure that all requirements are satisfied.

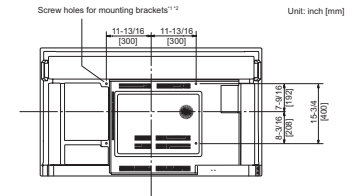
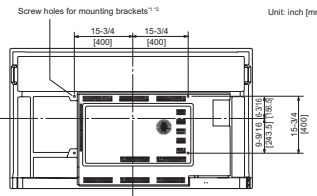
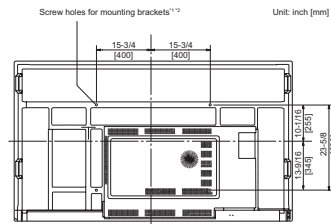
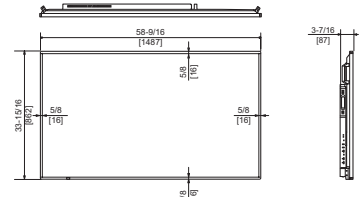
PN-LB863



PN-LB753



PN-LB653



Units: Inch (mm)



For more information on Synappx application, visit <https://business.sharpusa.com/Synappx>

Optional PN-ZCMS1 AV Soundbar



PN-ZCMS1 AV Soundbar Specifications

Camera	Pixels	12MP
	Field of view	120°
	Zoom	Max. 5x
	Resolution	Max. 3,840 x 2,160
Microphone	Adjustable Angle	Up 15°, Down 15° (manual)
	Voice Pickup Range	8 meters
Speaker	Mic Array	6 Elements
	Output Power	8 watts

SHARP

SHARP ELECTRONICS CORPORATION
100 Paragon Drive, Montvale, NJ 07645
1-800-BE-SHARP • business.sharpusa.com

Sharp, AQUOS BOARD, Synappx and all related trademarks are trademarks or registered trademarks of Sharp Corporation and/or its affiliated companies. The terms HDMI, HDMI High-Definition Multimedia Interface, and the HDMI Logo are trademarks or registered trademarks of HDMI Licensing Administrator, Inc. All other brand names and product names may be trademarks or registered trademarks of their respective owners.