

ThinkSmart Core Kits with Microsoft Teams Rooms

Lenovo makes it easy to incorporate smarter collaboration technology into meeting rooms of all sizes with the new ThinkSmart Core Kits with Microsoft Teams Rooms.

These purpose-built, modular room kit solutions start with ThinkSmart Core, a compute that is powered by 11th Gen Intel® Core™ vPro™ processors with Intel® Iris® X^e graphics for optimized business productivity and collaboration. ThinkSmart Core is certified and preloaded with Microsoft Teams Rooms to help employees connect, share, and collaborate seamlessly and securely from wherever they may be working. In addition to being bundled with one year of Smart Collaboration Professional Services Deploy and Maintain, ThinkSmart Core also comes with remote manageability through Lenovo's custom-built, preloaded ThinkSmart Manager software.¹

With multiple options, ThinkSmart Core Kits are designed to fit within any infrastructure and budget considerations. For spaces with existing A/V technology, choose ThinkSmart Core + Controller, which includes a 10.1-inch touch controller with integrated IR sensors. For a complete solution in one box, choose ThinkSmart Core Full Room Kit. In addition to ThinkSmart Core and Controller, this kit includes ThinkSmart Cam—the first AI smart camera from Lenovo—and ThinkSmart Bar speaker with integrated mics for immersive sound in rooms of all sizes.²

¹ThinkSmart Manager comes pre-loaded on all ThinkSmart Core devices. ThinkSmart Manager has two levels: Basic and Premium. Premium is included with your ThinkSmart Core purchase for one year. You can choose to continue service for an additional cost.

²ThinkSmart Core Full Room Kit is available with or without additional mic pods for the ThinkSmart Bar.

Smarter
technology
for all

Lenovo



Certified for
Microsoft Teams



ThinkSmart Core + Controller with Microsoft Teams Rooms



ThinkSmart Core



EASY TO CHOOSE

When it comes to room system computes, ThinkSmart Core is the smarter choice with its powerful 11th Gen Intel® Core™ vPro® processor and Intel® Iris® Xe graphics, secure and trusted Windows 10 IoT Enterprise operating system, ports to support multiple audio and visual accessories, and integrated cable management.



EASY TO MANAGE

IT teams can monitor, manage, and troubleshoot ThinkSmart Core remotely using pre-loaded ThinkSmart Manager software.¹ ThinkSmart Core also comes bundled with one year of Smart Collaboration Professional Services Deploy and Maintain for personalized support during setup and ongoing maintenance.



EASY TO TRUST

Built-in security solutions from Lenovo ThinkShield and Microsoft offer two more layers of protection on top of the Intel® vPro® platform, which provides the world's most comprehensive hardware-based security for business.

ThinkSmart Controller



EASY TO SHARE

The 10.1-inch, 10-point touch display allows users to initiate and control the meeting, share content, collaborate face-to-face, and communicate easily.



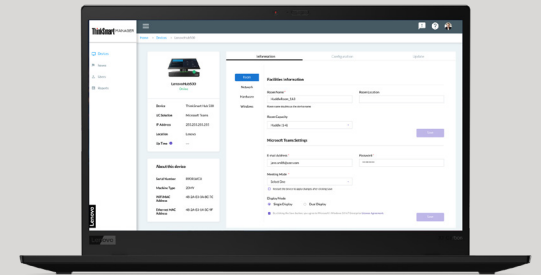
EASY TO USE

ThinkSmart Controller features the familiar Microsoft Teams Rooms interface, making it easy for on-site employees to collaborate with colleagues working remotely.



EASY TO SEE

Collaborating with colleagues working remotely is easy with a 16:10 aspect ratio and 1280 x 800 resolution. And no more smudges clouding the view thanks to the Controller's anti-glare and anti-fingerprint display.



ThinkSmart Manager

This custom-built manageability console gives your IT team the power to deploy, monitor, and troubleshoot your entire fleet of Lenovo ThinkSmart devices all from one place.

- Leverage a single console to remotely deploy, manage, configure, update, and resolve issues
- See real-time status by device and receive live at-a-glance issues lists
- Streamline actions across multiple devices with “apply all” option
- Generate reports to keep tabs on device issues and trends
- Take advantage of elevated security options

¹ThinkSmart Manager comes pre-loaded on all ThinkSmart Core devices. ThinkSmart Manager has two levels: Basic and Premium. Premium is included with your ThinkSmart Core purchase for one year. You can choose to continue service for an additional cost.

ThinkSmart Core Full Room Kit with Microsoft Teams Rooms

INCLUDES THINKSMART CORE + CONTROLLER +



ThinkSmart Cam



CAPTURES REALITY

A wide field of view combines with high resolution and frame rates to eliminate distracting lag and distortion. ThinkSmart Cam also delivers higher contrast, vivid colors, and brighter images in low-light environments.



EAGER TO LEARN

Lenovo's first AI smart camera follows the conversation and encourages interactivity for more productive meetings with features² like active speaker tracking and whiteboard awareness.



FITS RIGHT IN

From its compact, lightweight design to its certified compatibility with Microsoft Teams Rooms, ThinkSmart Cam fits into any space. It can be placed on a tabletop or mounted to a wall or TV.



EASY TO MANAGE

When integrated with ThinkSmart Manager³, ThinkSmart Cam can be centrally managed and customized to meet the needs of the users or space.



ThinkSmart Bar



LISTEN UP

With stereo speakers, four built-in mics⁴ with 180-degree wide-angle coverage, and integrated DSP noise cancellation, ThinkSmart Bar delivers exceptional sound quality with lifelike clarity.



BUILT FOR SCALE

ThinkSmart Bar has a speaker and integrated mic range of 8.5m to accommodate a wide range of room sizes, from huddle rooms to boardrooms.⁴



SIMPLE SETUP

ThinkSmart Bar is certified for Microsoft Teams Rooms and can be placed on a tabletop or mounted to a wall or TV.



EASY TO MANAGE

When integrated with ThinkSmart Manager³, ThinkSmart Bar can be centrally managed and customized to meet the needs of the users or space.

Optional Smart Collaboration Professional Services

ASSESS

Lenovo is here to help identify any issues that could sidetrack your deployment by providing a detailed assessment of potential red flags and a follow-up report.

DESIGN

Lenovo evaluates and categorizes your meeting spaces by infrastructure and experience needs to design a "room standard" that includes hardware, software, and service recommendations.

DEPLOY⁵

From virtual deployment installation to integration assistance, Lenovo ensures your ThinkSmart devices function optimally in your office environment.

MAINTAIN⁵

Our easy-to-follow do's and don'ts, remote check-ins, and assistance with ongoing security patches and updates take the stress out of updates and device changes.

TRAIN

Lenovo helps instruct all your audiences—IT and AV support teams, end users, and executives—on how to fully take advantage of your new technology.

ONSITE

Lenovo provides white glove treatment through a dedicated, on-site specialist who can perform any of the above services, including complete physical set up, installation, configuration, and device troubleshooting.

²AI features are controlled via ThinkSmart Manager, which is available with the purchase of ThinkSmart Core. Whiteboard awareness is available at ship support. People counting will be available in Spring 2021 (v2.0) with ThinkSmart Manager.

³ThinkSmart Manager comes pre-loaded on all ThinkSmart Core devices. ThinkSmart Manager has two levels: Basic and Premium. Premium is included with your ThinkSmart Core purchase for one year. You can choose to continue service for an additional cost.

⁴ThinkSmart Core Full Room Kit is available with or without additional mic pods for the ThinkSmart Bar.

⁵ThinkSmart Core comes bundled with one year of Smart Collaboration Professional Services Deploy and Maintain.

ThinkSmart Core + Controller Product Specifications

ThinkSmart Core

performance

PROCESSOR

Intel® Core™ i5-1145G7E IoTG vPro® Processor

OPERATING SYSTEM

Windows® 10 IoT Enterprise SAC

MEMORY

8 GB (Dual-Channel) DDR4 3200MHz

STORAGE

256GB PCIe TLC SSD

GRAPHICS

Intel® Iris® Xe Graphics

security

TPM 2.0

Kensington™ MiniSaver lock slot

Integrated Cable Management

connectivity

1x HDMI Ingest

2x HDMI-Out

1x RJ45 Gigabit Ethernet

2x USB-A 3.2 Gen 2

1x USB-A 3.2 Gen 1

1x USB-C 3.2 Gen 2

1x USB-C 3.2 Gen 1 for ThinkSmart Controller

1x Standard Think Power

WIFI

WLAN 802.11 AC (2x2)

Bluetooth® Low Energy (LE) 5.0

design

DIMENSIONS (W X D X H)

226 x 200 x 37.5 mm

8.90 x 7.87 x 1.48 in

WEIGHT

1.12 kg/2.47 lbs.

manageability

ThinkSmart Manager

warranty

3-year Warranty with Premier Support

ThinkSmart Controller

design

DISPLAY

10.1" 10-point Touch (1280x800 resolution, <340 nits) with 16:10 aspect ratio, 30- and 60-degree rotatable, anti-glare and anti-fingerprint

CONNECTIVITY

1x USB-C 2.0

1x 3.5mm headphone

security

Kensington™ MiniSaver lock slot

manageability

ThinkSmart Manager

warranty

3-year Warranty with Premier Support



Explore our modular collaboration room solutions at [Lenovo.com/ThinkSmart](https://lenovo.com/ThinkSmart)



©2021 Lenovo. All rights reserved. These products are available while supplies last. For any questions concerning price, please contact your Lenovo Account Executive. Lenovo is not responsible for photographic or typographic errors. Warranty: For a copy of applicable warranties, write to: Warranty Information, 500 Park Offices Drive, RTP, NC 27709, Attn: Dept. ZPYA/B600. Lenovo makes no representation or warranty regarding third-party products or services. Trademarks: Lenovo, the Lenovo logo, Rescue and Recovery, ThinkPad, ThinkCentre, ThinkStation, ThinkVantage, and ThinkVision are trademarks or registered trademarks of Lenovo. Microsoft, Windows, and Vista are registered trademarks of Microsoft Corporation. Intel, the Intel logo, Intel Inside, Intel Core, and Core Inside are trademarks of Intel Corporation in the U.S. and/or other countries. Other company, product and service names may be trademarks or service marks of others.