

Hisense

Laser
cinema

LASER LIGHTS. CINEMATIC NIGHTS

PX3-PRO



Information

Liebe Hisense Partner,

Wir freuen uns, Euch über den Launch des brandneuen **Hisense Laser Cinema PX3 PRO** in Deutschland informieren zu dürfen.

Verkaufsstart: ab 6. September 2024

Kommunikationsstart: 6. September 2024 ab 12 Uhr

- 1 Go Live der Pressemitteilung**
- 2 Kommunikation über Social Media**
- 3 Kommunikation via Newsletter**
- 4 Kommunikation über Handelspartner**
- 5 Produkthanlage & Ankündigung für Endkunden**

UVP in Deutschland (inkl. MWSt): 2.999€

EAN:6942351408262

Product Specs



TRICHROM

Triple Colour Laser Light



FILMMAKER MODE

Filmmaker Mode



Dolby
Vision.Atmos



VIDAA

Taille de l'image projetée (pouces)	X (mm)	Y (mm)	A (mm)	B (mm)
80	1 771	996	116	325
90	1 993	1 121	165	356
100	2 214	1 245	214	387
110	2 435	1 370	263	419
120	2 657	1 494	311	450
130	2 878	1 619	360	482
140	3 100	1 743	409	513
150	3 321	1 868	457	545

X(mm): Länge des projizierten Bildes
Y(mm): Breite des projizierten Bildes
A(mm): Abstand von der Rückseite des Projektors zur Wand
B(mm): Abstand vom Sideboard bis zum unteren Teil des Bildschirms

- 80-150" Adjustable Projection Size
- Pure Triple Laser Light Source
- 110% BT.2020 Super Wide Colour Gamut
- 4K UHD Picture Quality
- Dolby Vision, HDR10+, HDR10 & HLG
- 3D Support
- 3000 ANSI Lumens Brightness
- 2,000,000:1 Dynamic Contrast
- 3000:1 Native Contrast
- 2K@240Hz & 2K@120Hz High Refresh Rate
- 0.22 Ultra Short Throw Ratio
- Filmmaker Mode, Smooth Motion
- IMAX Enhanced
- Dolby Atmos Audio Technology
- Harman Kardon Audio Solution
- 50 Watt Sound Power
- VIDAA U7.6 Smart TV
- Airplay2 & Apple Home
- Designed for Xbox
- Various apps: Netflix, Disney+, Apple TV, etc.
- MT9618, HDMI2.1, USB3.0
- Eye-friendly Designed

Lieferumfang



- 1x Laser Cinema
- 1x Solarfernbedienung
- 2x Schutzhandschuhe für den Aufbau
- 1x Netzkabel
- 1x BDA Laser Cinema
- 1x Reinigungsset für das Objektiv
- 2x C –Fixierung
- Montageanleitung für die C-förmigen Fixierungen

LOGISTIKINFORMATION

- Produktmaße in cm (LxTxH) 55×29,6×12
- Gewicht Konsole in kg: 9
- Verpackungsgewicht in kg: 11,6
- Verpackungsmaße (LxTxH) in cm 66,3×40,3×29,8

Verbesserungen

Hisense

Y24 Laser Cinema PX3-PRO Specification Upgrade Greatly

PX3-PRO



PX2-PRO



Model

Screen Size

Image Quality

Audio

Fresh Rate

3D Function

80-150"

Bigger and Better

90-130"

Brightness: 3000m

A bright, vivid and versatile image

Brightness: 2400lm

Native Contrast: 3000:1

Incredibly detailed color and contrast

Native Contrast: 1000:1

Throw Ratio: 0.22

Maximized space, magnified screen

Throw Ratio: 0.25

Passive Radiators

Smaller space, stronger bass

N/A

Harman Kardon®

Professional and Three-dimensional

Loaspeaker

2K@240Hz/120Hz

Game faster, win sooner

4K60Hz

3D Mode

Dive into the world

N/A

Model	PX3-PRO	PX3	PX2-PRO	Core Upgrade
Light Source	Triple Colour Laser	Triple Colour Laser	Triple Colour Laser	
Display Tech	DLP 0.47" DMD	DLP 0.47" DMD	DLP 0.47" DMD	
Throw Ratio	0.22	0.22	0.25	Closer to the wall and take up less space
Screen Size	80-150"	80-150"	90-130"	More massive and vivid image
Resolution	4K UHD	4K UHD	4K UHD	
Brightness (lm)	3000	2800	2400	Higher brightness
Refresh Rate	4K@60Hz, 2K@240Hz, 2K@120Hz	4K@60Hz, 2K@240Hz, 2K@120Hz	4K@60Hz	Smoother sport scene and not shaking
Wide Colour Gamut	BT.2020 110%	BT.2020 110%	BT.2020 107%	Richer colour performance
Native Contrast	3000:1	3000:1	1000:1	More dark and bright details at the same time
3D	Yes	No	No	
TV Tuner	No	Yes	No	
HDR	Dolby Vision, HDR10+, HLG	Dolby Vision, HDR10+ dec., HLG	Dolby Vision, HDR10, HLG	
Smooth motion	Yes	Yes	Yes	
Game mode	Yes	Yes	Yes	
Filmmaker mode	Yes	Yes	Yes	
IMAX	Yes	No	No	
Audio	Harman Kardon, Dolby Atmos	Harman Kardon, Dolby Atmos	Dolby Atmos	More professional audio system and cinematic experience
Platform	MT9618	MT9618	MT9900	Improve the system performance
OS	VIDAA U7.6	VIDAA U7.6	VIDAA U6	

Der PX3-PRO gehört zur „Designed for Xbox Limited Series“ und ermöglicht nahtlose Kompatibilität, Plug-and-Play-Komfort und maßgeschneiderten Funktionen, die speziell auf das Xbox-Gameplay zugeschnitten sind.



Hisense

LASER TV

GREEN

FEATURE

Energy Saving

Carbon Promise

High Recyclability

Eye Protection

TAGLINE

Doing More, Using Less

Good for You, Good for the Planet

Designed for Today, Mindful of Tomorrow

Look for Better, Look for Longer

BENEFITS

Sustainability

EVIDENCE

50% Less Energy Output

TÜV Rheinland Certified

91% Recyclable

Zero Harmful Blue Light

CINEMATIC

FEATURE

Massive 4K Screen

Super Wide Colour Gamut

Super High Color Accuracy

Filmmaker Mode

Dolby World

TAGLINE

A Boundless World of WOW

Open Eyes to a Colorful Universe

All About Being Real

Brings You the Original

Surround Your Senses

BENEFITS

Home Theater

EVIDENCE

4K 90"-130" Large Screen

110% BT.2020

$\Delta E \approx 0.9$ less than 1

Filmmaker Mode

Dolby Vision Atmos

LPU TECHNOLOGY

PRO LASER ENGINE

TriChroma Laser Light

DLP Tech

Ultra Short Throw

PRO AI COMPUTING

AI Gamut Adaptive Algorithm

AI Brightness Enhancement Algorithm

AI Color Calibration System

AI Picture Quality Enhancement

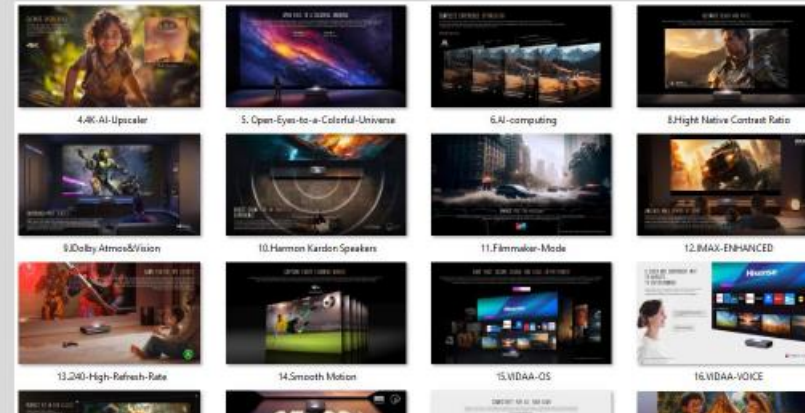




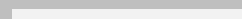
Product spec may differ by region

Toolbox

- Keyvisual
- Produktbilder (HD)
- Lifestyle Bilder
- Feature Bilder
- Demovideos
- Unbox Video
- Produktfeatures



HIER DOWNLOAD MARKETINGMATERIAL &
LISTUNGSMATERIAL



The image features a dark blue background with a glowing globe. The globe is composed of a dense network of thin, golden-yellow lines connecting numerous small, bright nodes. The nodes are more concentrated in the landmasses, particularly in North America and Europe, creating a starburst effect. The lines extend across the globe, representing a global network or data flow. The overall aesthetic is futuristic and technological.

DO BIG TOGETHER