



Product specification (design and specification subject to change without notice)

■ DISPLAY PANEL

| | |
|---------------------------------------|--------------------------------------|
| Screen Size (Diagonal) | 97.5-inch (2476.9 mm) |
| Panel type / Backlight | ADS / Direct-LED |
| Aspect ratio | 16:9 |
| Effective Display Area (W x H) | 2158.8 x 1214.3 mm (84.99" x 47.80") |
| Resolution (H x V) | 3840 x 2160 |
| Brightness (Typ) | 700 cd/m ² |
| Contrast Ratio (Typ) | 1200:1 |
| Dynamic Contrast Ratio | 50000:1 |
| Max. Display Colors | Approx. 1.07 Billion |
| Response Time (Typ) | 8.0 ms |
| Viewing Angle (Horizontal / Vertical) | 178° / 178° (CR>10) |
| Panel Life Time ¹ (Typ) | Approx. 50000 hours |
| Panel Surface Treatment | Anti-glare type (Haze 25%) |

¹ When the panel lifetime is at 50% of the brightness under the condition of 25 degrees Celsius (+/- 2 degrees Celsius).

■ CONNECTION TERMINAL

| | | |
|---------------|--|---|
| HDMI™ IN | HDMI™ Type A Connector x 3 | Linear PCM (Sampling frequency : 48 kHz/44.1 kHz/32 kHz) Compatible with HDCP 2.2 |
| PC IN | Mini D-Sub 15-pin (DCC2B) x 1 | Y/G : with sync 1.0 V [p-p] (75 Ω) : without sync 0.7 V [p-p] (75 Ω) P _B /C _B /B : without sync 0.7 V [p-p] (75 Ω) P _R /C _R /R : without sync 0.7 V [p-p] (75 Ω) HD/VD : TTL (high impedance) |
| SERIAL IN | D-sub 9pin x 1, RS-232C Compatible | |
| IR IN / OUT | Stereo Mini Jack (Φ3.5 mm) x 1 / x 1 | |
| AUDIO IN | Stereo Mini Jack (Φ3.5 mm) x 1 (Shared video input except USB and MEMORY VIEWER) | 0.5 V [rms] |
| AUDIO OUT | Stereo Mini Jack (Φ3.5 mm) x 1 Variable (-∞ - 0 dB) (1 kHz 0 dB Input, 10 kΩ Load) | 0.5 V [rms] |
| LAN | RJ45 x 1 compatible with PLink™ RJ45 10BASE10-T/100BASE-TX | |
| USB | USB Type A Connector x 1 (DC 5 V / 1 A, USB 3.0 is supported) USB Type A Connector x 1 (DC 5 V / 2 A, USB 2.0 is supported) USB Type C Connector x 1 (Max 60 W Power Delivery compatible, USB2.0 is supported, DP Alt Mode compatible) | |
| SENSOR | 4-pole sub-mini Jack (Φ2.5 mm) x 1 | |
| Function slot | Intel® SDM specification Corresponding size SDM-S / SDM-L, Supply power 3.3 V / 1.1 A, 12 V / 5.5 A | |

■ AUDIO

| | |
|------------------|-------------------|
| Built in Speaker | 20W [10 W + 10 W] |
|------------------|-------------------|

■ ELECTRICAL

| | |
|--|-------------------------------------|
| Power Requirements | AC110-240 V 50 Hz / 60 Hz 5.2-2.6 A |
| Power Consumption | 285 W (Shipping Condition) |
| On Mode Average Power Consumption ¹ | 253 W (Picture Mode: [Standard]) |
| Power Off Condition | Approx. 0.3 W |
| Stand-by Condition | Approx. 0.5 W |
| Apparent power | 502 VA |

¹ Based on IEC 62087 Ed.2 measurement method

■ MECHANICAL

| | |
|-------------------------------|--|
| Dimension (W x H x D) | 2194 x 1256 x 90 mm (86.36" x 49.46" x 3.55") |
| Weight | 70.0 kg (154.33 lbs) |
| Carton Dimensions (W x H x D) | 2384 x 1835 x 275 mm (93.86" x 72.25" x 10.83") |
| Gross Weight | 104 kg (229.3 lbs) |
| Cabinet Material | Bezel / Back cover: Metal |
| Bezel Color | Black |
| Bezel Width | T/R/L 15.9mm (0.63"), B: 20.1mm (0.80") |
| Pitch for Wall-Hanging | VESA Compliant 600 x 400 mm (23.7" x 15.8") (Installed by: M8 screws / Screw hole depth 20 mm (0.79")) |

¹ Remote IR sensor is detachable.

■ INSTALLATION

| | |
|---------------|---|
| Orientation | Landscape / Portrait |
| Tilting Angle | Landscape : 0 - 20 degrees forward / backward Portrait : 0 - 20 degrees forward / backward |

¹ Please contact your sales representative with regard to the tilt angle before installation.

■ ENVIRONMENTAL

| | | |
|-----------------------|-------------|--|
| Operating Environment | Temperature | : 0 °C to 40 °C (32 °F to 104 °F) ¹ : 0 °C to 35 °C (32 °F to 95 °F) ² |
| | Humidity | : 20% to 80% (No condensation) |

¹ : for up to 1400 m (4593 ft) altitude ² : for between 1400 m (4593 ft) and 2800 m (9186 ft) altitude

· Depending on the temperature or humidity conditions, uneven brightness may be observed. This is not a malfunction.

· This unevenness will disappear while applying current continuously. If not, consult the distributor.

| | |
|----------|--------------|
| UPC Code | 885170415874 |
|----------|--------------|

MAIN FEATURE

| | |
|--|--------------|
| Input search/Input detection | Yes |
| Failover/Failback | Yes |
| Digital Zoom | Yes |
| Multi-screen setting/display | Yes |
| Portrait zoom | Yes |
| Power on Screen Delay | Yes |
| Auto setting | Yes |
| Screen Saver | Yes |
| HDMI™ Power Management | Yes |
| PC Power Management | Yes |
| Power save | Yes |
| Button Lock | Yes |
| Controller user level | Yes |
| 12-segment color management | Yes |
| Dynamic contrast | Yes |
| Color enhancement | Yes |
| Refine enhancer | Yes |
| Gradation smoother | Yes |
| Dynamic backlight control | Yes |
| Set up timer | Yes |
| AMX D.D. | Yes |
| Crestron Connected™ | Yes (V2) |
| WEB Browser control | Yes |
| PJLink | Yes (Class2) |
| SNMP | Yes |
| Image settings | Yes |
| HDMI™ CEC / ARC | Yes / Yes |
| USB Media Player | Yes |
| Memory Viewer | Yes |
| Playlist edit (Remote control operation) | Yes |
| Internal memory | Yes |
| Data Cloning | Yes |
| Blue light reduction mode | Yes |
| Whiteboard/mouse annotation | Yes |
| Operating Time¹ | 24h / day |

1 In case of running for a long time, the moving image is recommended to be displayed. If you display a still picture for an extended period, the image retention might remain on the screen. However, image retention can gradually disappear by displaying movie images.

COMPATIBLE SOFTWARE

| | |
|--|-----|
| Multi Monitoring & Control Software (Early Warning Software) compatible Ver. 3.3 | Yes |
| Video Wall Manager compatible Ver. 1.15 | Yes |
| Content management Software compatible Ver. 4.0.1 | Yes |
| Screen Transfer Compatible Ver. 3.0.0 | Yes |

STANDARD (CERTIFICATIONS)

| | |
|-----------------------|---|
| SAFETY REGULATIONS | IEC 62368-1:2014 IEC 62368-1:2018 UL 62368-1:2019 CSA C22.2 NO. 62368-1:19 EN 62368-1:2014 AS/NZS 62368-1:2022 |
| RADIATION REGULATIONS | FCC CFR 47, Part 15, Subpart B 2015 Class A ANSI C63.4-2014 ICES-003 Issue7:2020 EN 55032: 2015 EN 55035: 2017 AS/NZS CISPR32:2015 |

REMOTE CONTROL TRANSMITTER

| | |
|------------------------|---|
| Power Requirements | DC 3 V (AAA Size batteries x 2) |
| Operating distance | Approx. 7m¹ (23ft) |
| Weight | Approx. 63g (2.3oz) including batteries |
| Dimensions (W x H x D) | 48 x 134 x 20 mm (1.9" x 5.3" x 0.8") |

1 When operated directly in front of receptor.

INCLUDED ACCESSORIES

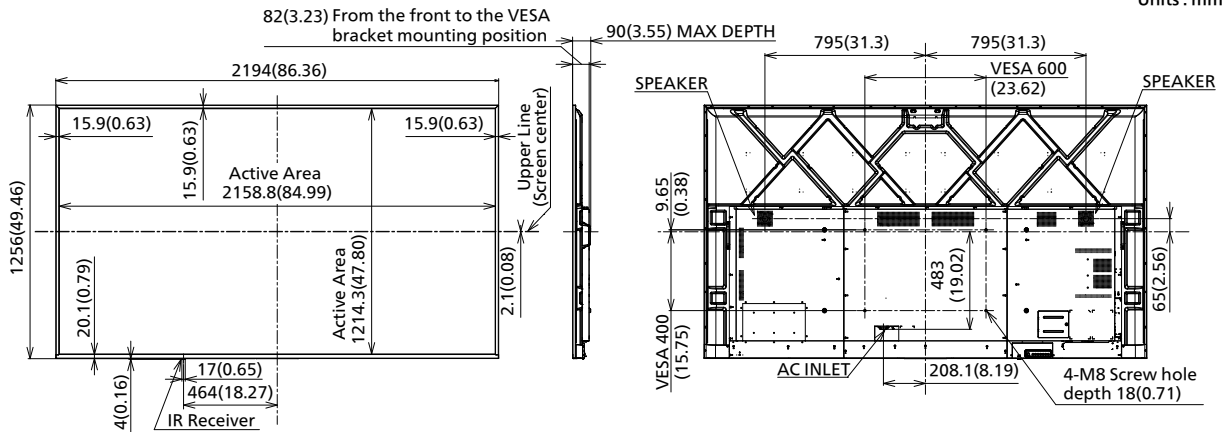
- Remote Control x 1 - Batteries (AAA size) x 2
- AC cord (approx. 2 m (78.7")) - sensor x 1
- Clamper x 2 - SDM-S Attachment - Operating Instruction Book

OPTIONAL ACCESSORIES

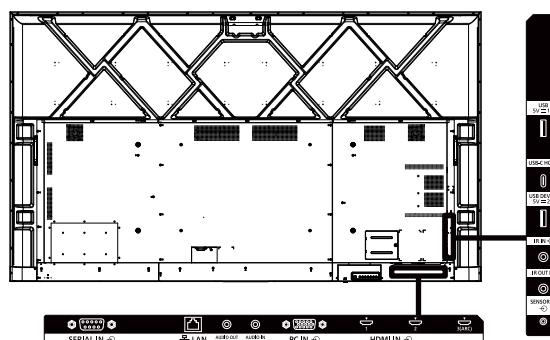
| | |
|-----------------------------|----------------------|
| Early warning software | ET-SWA100/105 Series |
| Wall-Hanging Bracket | TY-WK98PV1 |
| 3G-SDI terminal board | TY-SB01SS |
| 12G-SDI terminal board | TY-SB01QS |
| DIGITAL LINK terminal board | TY-SB01DL |

DIMENSIONS

Cautions: This drawing is not a scale
Units : mm (inches)



CONNECTION TERMINAL



List of correspondence signals

The picture signal which can indicate this machine is as it is the following table.

| Correspondence signal | Resolution (dot) | Scan rate | | Dot clock rate (MHz) | Format ² | Plug and play compatible signal ⁴ | | | | | | |
|-----------------------|--------------------------------|------------------|---------------|----------------------|---------------------|--|--------|----|--------|--------|----|----|
| | | Horizontal (kHz) | Vertical (Hz) | | | HDMI TM | | | USB-C | | PC | |
| | | | | | | 4K/60p ⁵ | 4K/30p | 2K | 4K/60p | 4K/30p | | 2K |
| 480/60i | 720 x 480i | 15.73 | 59.94 | 13.50 | Y | - | - | - | - | - | - | - |
| 576/50i | 720 x 576i | 15.63 | 50.00 | 13.50 | Y | - | - | - | - | - | - | - |
| 480/60i | 720 (1440) x 480i ¹ | 15.73 | 59.94 | 27.00 | H/UC | ○ | ○ | ○ | - | - | - | - |
| 576/50i | 720 (1440) x 576i ¹ | 15.63 | 50.00 | 27.00 | H/UC | ○ | ○ | ○ | - | - | - | - |
| 480/60p | 720 x 483 | 31.47 | 59.94 | 27.00 | Y/H/UC | ○ | ○ | ○ | ○ | ○ | ○ | - |
| 576/50p | 720 x 576 | 31.25 | 50.00 | 27.00 | Y/H/UC | ○ | ○ | ○ | ○ | ○ | ○ | - |
| 720/60p | 1280 x 720 | 45.00 | 60.00 | 74.25 | Y/H/UC | ○ | ○ | ○ | ○ | ○ | ○ | - |
| 720/50p | 1280 x 720 | 37.50 | 50.00 | 74.25 | Y/H/UC | ○ | ○ | ○ | ○ | ○ | ○ | - |
| 1080/60i | 1920 x 1080i | 33.75 | 60.00 | 74.25 | Y/H/UC | ○ | ○ | ○ | ○ | ○ | ○ | - |
| 1080/50i | 1920 x 1080i | 28.13 | 50.00 | 74.25 | Y/H/UC | ○ | ○ | ○ | ○ | ○ | ○ | - |
| 1080/24p | 1920 x 1080 | 27.00 | 24.00 | 74.25 | Y/H/UC | ○ | ○ | ○ | ○ | ○ | ○ | - |
| 1080/24PsF | 1920 x 1080i | 27.00 | 48.00 | 74.25 | Y/H/UC | - | - | - | - | - | - | - |
| 1080/25p | 1920 x 1080 | 28.13 | 25.00 | 74.25 | Y/H/UC | ○ | ○ | ○ | ○ | ○ | ○ | - |
| 1080/30p | 1920 x 1080 | 33.75 | 30.00 | 74.25 | Y/H/UC | ○ | ○ | ○ | ○ | ○ | ○ | - |
| 1080/60p | 1920 x 1080 | 67.50 | 60.00 | 148.50 | Y/H/UC | ○ | ○ | ○ | ○ | ○ | ○ | - |
| 1080/50p | 1920 x 1080 | 56.25 | 50.00 | 148.50 | Y/H/UC | ○ | ○ | ○ | ○ | ○ | ○ | - |
| 2K/24p | 2048 x 1080 | 27.00 | 24.00 | 74.25 | H/UC | - | - | - | - | - | - | - |
| 2K/25p | 2048 x 1080 | 28.13 | 25.00 | 74.25 | H/UC | - | - | - | - | - | - | - |
| 2K/30p | 2048 x 1080 | 33.75 | 30.00 | 74.25 | H/UC | - | - | - | - | - | - | - |
| 2K/48p | 2048 x 1080 | 54.00 | 48.00 | 148.50 | H/UC | - | - | - | - | - | - | - |
| 2K/60p | 2048 x 1080 | 67.50 | 60.00 | 148.50 | H/UC | - | - | - | - | - | - | - |
| 2K/50p | 2048 x 1080 | 56.25 | 50.00 | 148.50 | H/UC | - | - | - | - | - | - | - |
| 3840 x 2160/24p | 3840 x 2160 | 54.00 | 24.00 | 297.00 | H/UC | ○ | ○ | - | ○ | ○ | - | - |
| 3840 x 2160/25p | 3840 x 2160 | 56.25 | 25.00 | 297.00 | H/UC | ○ | ○ | - | ○ | ○ | - | - |
| 3840 x 2160/30p | 3840 x 2160 | 67.50 | 30.00 | 297.00 | H/UC | ○ | ○ | - | ○ | ○ | - | - |
| 3840 x 2160/60p | 3840 x 2160 | 135.00 | 60.00 | 594.00 | H/UC | ○ | - | - | ○ | - | - | - |
| 3840 x 2160/50p | 3840 x 2160 | 112.50 | 50.00 | 594.00 | H/UC | ○ | - | - | ○ | - | - | - |
| 4096 x 2160/24p | 4096 x 2160 | 54.00 | 24.00 | 297.00 | H/UC | ○ | ○ | - | ○ | ○ | - | - |
| 4096 x 2160/25p | 4096 x 2160 | 56.25 | 25.00 | 297.00 | H/UC | ○ | ○ | - | ○ | ○ | - | - |
| 4096 x 2160/30p | 4096 x 2160 | 67.50 | 30.00 | 297.00 | H/UC | ○ | ○ | - | ○ | ○ | - | - |
| 4096 x 2160/60p | 4096 x 2160 | 135.00 | 60.00 | 594.00 | H/UC | ○ | - | - | ○ | - | - | - |
| 4096 x 2160/50p | 4096 x 2160 | 112.50 | 50.00 | 594.00 | H/UC | ○ | - | - | ○ | - | - | - |
| 640 x 400/70 | 640 x 400 | 31.47 | 70.09 | 25.18 | R/H/UC | - | - | - | - | - | - | - |
| 640 x 400/85 | 640 x 400 | 37.86 | 85.08 | 31.50 | R/H/UC | - | - | - | - | - | - | - |
| 640 x 480/60 | 640 x 480 | 31.47 | 59.94 | 25.18 | R/H/UC | ○ | ○ | ○ | ○ | ○ | ○ | ○ |
| 640 x 480/67 | 640 x 480 | 35.00 | 66.67 | 30.24 | R/H/UC | - | - | - | - | - | - | - |
| 640 x 480/73 | 640 x 480 | 37.86 | 72.81 | 31.50 | R/H/UC | - | - | - | - | - | - | - |
| 640 x 480/75 | 640 x 480 | 37.50 | 75.00 | 31.50 | R/H/UC | - | - | - | - | - | - | - |
| 640 x 480/85 | 640 x 480 | 43.27 | 85.01 | 36.00 | R/H/UC | - | - | - | - | - | - | - |
| 800 x 600/56 | 800 x 600 | 35.16 | 56.25 | 36.00 | R/H/UC | - | - | - | - | - | - | - |
| 800 x 600/60 | 800 x 600 | 37.88 | 60.32 | 40.00 | R/H/UC | ○ | ○ | ○ | ○ | ○ | ○ | ○ |
| 800 x 600/72 | 800 x 600 | 48.08 | 72.19 | 50.00 | R/H/UC | - | - | - | - | - | - | - |
| 800 x 600/75 | 800 x 600 | 46.88 | 75.00 | 49.50 | R/H/UC | - | - | - | - | - | - | - |
| 800 x 600/85 | 800 x 600 | 53.67 | 85.06 | 56.25 | R/H/UC | - | - | - | - | - | - | - |
| 832 x 624/75 | 832 x 624 | 49.72 | 74.55 | 57.28 | R/H/UC | - | - | - | - | - | - | - |
| 852 x 480/60 | 852 x 480 | 31.47 | 59.94 | 34.24 | H/UC | - | - | - | - | - | - | - |
| 1024 x 768/50 | 1024 x 768 | 39.55 | 50.00 | 51.89 | H/UC | - | - | - | - | - | - | - |
| 1024 x 768/60 | 1024 x 768 | 48.36 | 60.00 | 65.00 | R/H/UC | ○ | ○ | ○ | ○ | ○ | ○ | ○ |
| 1024 x 768/70 | 1024 x 768 | 56.48 | 70.07 | 75.00 | R/H/UC | - | - | - | - | - | - | - |
| 1024 x 768/75 | 1024 x 768 | 60.02 | 75.03 | 78.75 | R/H/UC | - | - | - | - | - | - | - |
| 1024 x 768/82 | 1024 x 768 | 65.55 | 81.63 | 86.00 | R/H/UC | - | - | - | - | - | - | - |
| 1024 x 768/85 | 1024 x 768 | 68.68 | 85.00 | 94.50 | R/H/UC | - | - | - | - | - | - | - |
| 1066 x 600/60 | 1066 x 600 | 37.64 | 59.94 | 53.00 | H/UC | - | - | - | - | - | - | - |
| 1152 x 864/60 | 1152 x 864 | 53.70 | 60.00 | 81.62 | H/UC | - | - | - | ○ | ○ | ○ | - |
| 1152 x 864/70 | 1152 x 864 | 63.99 | 70.02 | 94.20 | R/H/UC | - | - | - | - | - | - | - |
| 1152 x 864/75 | 1152 x 864 | 67.50 | 75.00 | 108.00 | R/H/UC | - | - | - | - | - | - | - |
| 1152 x 864/85 | 1152 x 864 | 77.09 | 85.00 | 119.65 | R/H/UC | - | - | - | - | - | - | - |
| 1152 x 870/75 | 1152 x 870 | 68.68 | 75.06 | 100.00 | R/H/UC | - | - | - | - | - | - | - |
| 1280 x 720/60 | 1280 x 720 | 44.76 | 60.00 | 74.48 | R/H/UC | - | - | - | ○ | ○ | ○ | ○ |
| 1280 x 768/50 | 1280 x 768 | 39.55 | 49.94 | 65.18 | R/H/UC | - | - | - | - | - | - | - |
| 1280 x 768/60 | 1280 x 768 | 47.70 | 60.00 | 80.14 | R/H/UC | - | - | - | - | - | - | - |
| 1280 x 768/60 | 1280 x 768 | 47.78 | 59.87 | 79.50 | R/H/UC | - | - | - | - | - | - | - |
| 1280 x 800/50 | 1280 x 800 | 41.20 | 50.00 | 68.56 | R/H/UC | - | - | - | - | - | - | - |
| 1280 x 800/60 | 1280 x 800 | 49.31 | 59.91 | 71.00 | R/H/UC | - | - | - | - | - | - | - |
| 1280 x 800/60 | 1280 x 800 | 49.70 | 59.81 | 83.50 | R/H/UC | - | - | - | ○ | ○ | ○ | ○ |
| 1280 x 960/60 | 1280 x 960 | 60.00 | 60.00 | 108.00 | R/H/UC | - | - | - | - | - | - | - |
| 1280 x 960/85 | 1280 x 960 | 85.94 | 85.00 | 148.50 | R | - | - | - | - | - | - | - |
| 1280 x 1024/60 | 1280 x 1024 | 63.98 | 60.02 | 108.00 | R/H/UC | ○ | ○ | ○ | ○ | ○ | ○ | ○ |
| 1280 x 1024/75 | 1280 x 1024 | 79.98 | 75.02 | 135.00 | R/H/UC | - | - | - | - | - | - | - |
| 1280 x 1024/85 | 1280 x 1024 | 91.15 | 85.02 | 157.50 | R/H/UC | - | - | - | - | - | - | - |
| 1360 x 768/60 | 1360 x 768 | 47.71 | 60.02 | 85.50 | H/UC | - | - | - | - | - | - | - |
| 1360 x 768/60 | 1360 x 768 | 47.70 | 60.00 | 84.72 | H/UC | - | - | - | - | - | - | - |
| 1360 x 768/60 | 1360 x 768 | 47.72 | 59.80 | 84.75 | H/UC | - | - | - | - | - | - | - |
| 1366 x 768/50 | 1366 x 768 | 39.55 | 50.00 | 69.92 | H/UC | - | - | - | - | - | - | - |
| 1366 x 768/60 | 1366 x 768 | 48.39 | 60.03 | 86.71 | R/H/UC | - | - | - | - | - | - | - |
| 1366 x 768/60 | 1366 x 768 | 48.00 | 60.00 | 72.00 | R/H/UC | - | - | - | - | - | - | - |
| 1366 x 768/50 | 1366 x 768 | 39.56 | 49.89 | 69.00 | R/H/UC | - | - | - | - | - | - | - |
| 1366 x 768/60 | 1366 x 768 | 47.71 | 59.79 | 85.50 | R/H/UC | - | - | - | - | - | - | - |
| 1400 x 1050/60 | 1400 x 1050 | 65.22 | 60.00 | 122.61 | H/UC | - | - | - | - | - | - | - |

| Correspondence signal | Resolution (dot) | Scan rate | | Dot clock rate (MHz) | Format ² | Plug and play compatible signal ⁴ | | | | | | |
|-----------------------|--------------------------|------------------|---------------|----------------------|---------------------|--|--------|----|--------|--------|----|----|
| | | Horizontal (kHz) | Vertical (Hz) | | | HDMI™ | | | USB-C | | | PC |
| | | | | | | 4K/60p ⁵ | 4K/30p | 2K | 4K/60p | 4K/30p | 2K | |
| 1400 x 1050/75 | 1400 x 1050 | 82.20 | 75.00 | 155.85 | R/H/UC | - | - | - | - | - | - | - |
| 1440 x 900/60 | 1440 x 900 | 55.47 | 59.90 | 88.75 | R/H/UC | - | - | - | - | - | - | - |
| 1440 x 900/60 | 1440 x 900 | 55.92 | 60.00 | 106.47 | R/H/UC | - | - | - | - | - | - | - |
| 1600 x 900/50 | 1600 x 900 | 46.30 | 50.00 | 97.05 | H/UC | - | - | - | - | - | - | - |
| 1600 x 900/60 | 1600 x 900 | 60.00 | 60.00 | 108.00 | H/UC | - | - | - | - | - | - | - |
| 1600 x 900/60 | 1600 x 900 | 55.99 | 59.95 | 118.25 | H/UC | - | - | - | - | - | - | - |
| 1600 x 900/60 | 1600 x 900 | 55.92 | 60.00 | 119.00 | H/UC | - | - | - | ○ | ○ | ○ | - |
| 1600 x 1200/60 | 1600 x 1200 | 75.00 | 60.00 | 162.00 | R/H/UC | - | - | - | - | - | - | - |
| 1680 x 1050/60 | 1680 x 1050 | 65.29 | 59.95 | 146.25 | R/H/UC | - | - | - | - | - | - | - |
| 1920 x 1080/60 | 1920 x 1080 ³ | 66.59 | 59.93 | 138.50 | R/H/UC | - | - | - | - | - | - | - |
| 1920 x 1080/60 | 1920 x 1080 | 67.50 | 60.00 | 148.50 | R/H/UC | ○ | ○ | ○ | ○ | ○ | ○ | ○ |
| 1920 x 1200/60 | 1920 x 1200 | 74.04 | 59.95 | 154.00 | R/H/UC | ○ | ○ | ○ | ○ | ○ | ○ | ○ |
| 1920 x 2160/60 | 1920 x 2160 | 133.29 | 59.99 | 277.25 | H/UC | - | - | - | - | - | - | - |
| 1920 x 2160/60 | 1920 x 2160 | 135.00 | 60.00 | 297.00 | H/UC | - | - | - | - | - | - | - |
| 2560 x 1440/60 | 2560 x 1440 | 88.79 | 59.95 | 241.50 | H/UC | - | ○ | - | ○ | ○ | - | - |
| 2560 x 1600/50 | 2560 x 1600 | 82.37 | 49.95 | 286.00 | H/UC | - | - | - | - | - | - | - |
| 2560 x 1600/60 | 2560 x 1600 | 98.71 | 59.97 | 286.50 | H/UC | - | - | - | - | - | - | - |
| 3840 x 1080/60 | 3840 x 1080 | 66.63 | 59.97 | 266.50 | H/UC | - | - | - | - | - | - | - |
| 3840 x 2160/30 | 3840 x 2160 | 65.69 | 29.98 | 262.75 | H/UC | - | - | - | ○ | ○ | - | - |
| 3840 x 2160/60 | 3840 x 2160 | 133.31 | 60.00 | 533.25 | H/UC | - | - | - | ○ | - | - | - |

¹ Pixel-Repetition signal (dot clock frequency 27.0 MHz) only

² Alphabets inside the Format column represent as it follows.

R : D-sub RGB (PC IN)

Y : YCBCR/YPBPR (PC IN)

H : HDMI™ (HDMI™ 1, HDMI™ 2, HDMI™ 3)

UC : USB-C DP Alt Mode (USB-C HOST9)

³ Based on VESA CVT-RB (Reduced Blanking) standard

⁴ Signals with ○ in the plug and play compatible signal column is the signal described in the EDID (extended display identification data) of the display. without ○ in the plug and play compatible signal column, the resolution may not be selected on the computer even if the display is supporting it.

⁵ 4K / 60p means 4K / 60p / HDR and 4K / 60p / SDR.

Note

● The signal format distinguished automatically will be sometimes indication different from an actual input signal.

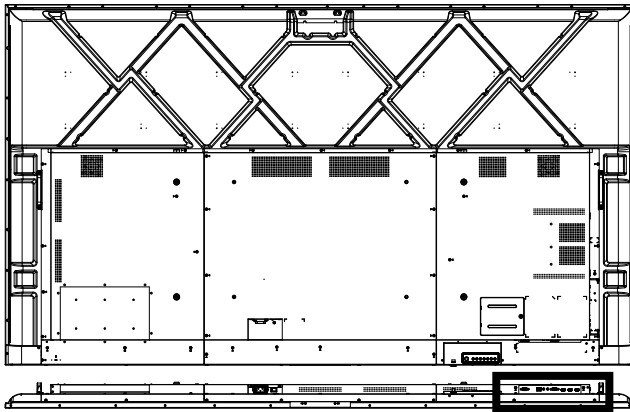
● [i] shown after the number of dots of resolution means the interlace signal.

● When 1080/30PsF signal and 1080/25PsF signal are input, they are processed as 1080/60i signal and 1080/50i signal, and then displayed.

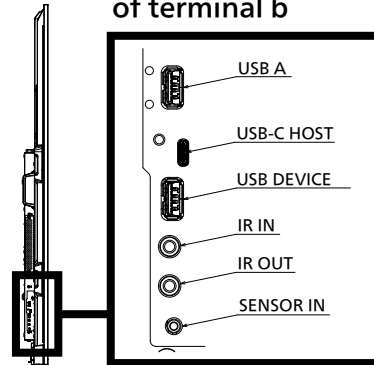
● When 1080/30PsF signal and 1080/25PsF signal are input, they are processed as 1080/60i signal and 1080/50i signal, and then displayed.

● Drawing of terminals

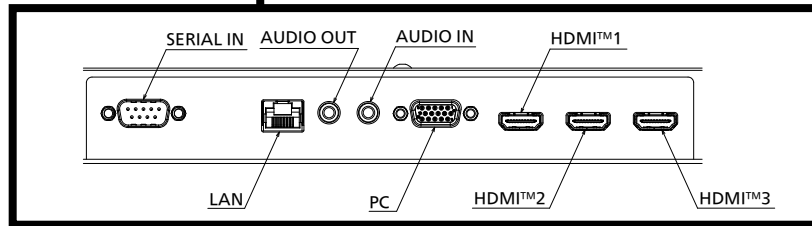
View from back



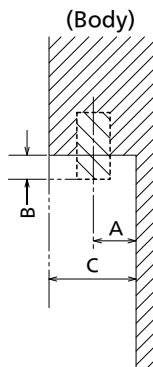
Magnified figure of terminal b



Magnified figure of terminal a



Sectional view of terminal a
(SERIAL IN / LAN / AUDIO OUT / AUDIO IN / PC /
HDMI™ 1 / HDMI™ 2 / HDMI™ 3)

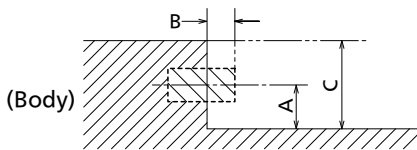


Terminal a
98SQ2H Terminal (Bottom)

Units : mm (inches)

| | SERIAL IN | LAN | AUDIO IN/OUT | PC | HDMI™ 1/2/3 |
|---|-------------|-------------|--------------|-------------|-------------|
| A | 16.4 (0.64) | 16.6 (0.65) | 16.3 (0.64) | 13.5 (0.53) | 14.8 (0.58) |
| B | 5.0 (0.19) | - | 2.5 (0.09) | 5.0 (0.19) | - |
| C | 32.5 (1.27) | | | | |

Sectional view of terminal b
(USB A / USB-C HOST / USB DEVICE / IR IN / IR OUT /
SENSOR)



Terminal b
98SQ2H Terminal (Side)

Units : mm (inches)

| | USB A | USB C | IR IN/OUT | SENSOR IN |
|---|-------------|-------------|-------------|-------------|
| A | 17.3 (0.68) | 13.5 (0.53) | 18.3 (0.72) | 16.8 (0.66) |
| B | - | - | 2.5 (0.09) | 1.2 (0.04) |
| C | 34.2 (1.34) | | | |

1 Due to the construction of terminal, some types of connecting cable or USB memory device cannot be used.
Be sure to use connecting cable or USB memory device after confirmation in this drawing.