

## VMV-402-SH

4-Input 3G SDI Switcher with  
Quad Mode and Ethernet Control



## User Manual

July 2022

## Table of Contents

- 1. Introduction ..... 02
- 2. Features ..... 02
- 3. Applications ..... 02
- 4. Package Contents ..... 02
- 5. Specifications ..... 03
- 6. Panel Descriptions ..... 04
- 7. Hardware Installation ..... 05
- 8. IR Remote Control ..... 05
- 9. Configuration and Remote Operation..... 06
  - 9.1 Installing the Application ..... 06
  - 9.2 Updating the Firmware ..... 06
  - 9.3 Setting Up the VMV-402-SH for the First Time ..... 10
  - 9.4 Most Common Settings ..... 10
  - 9.5 Select the Outputs Tab ..... 11
  - 9.7 Quad Mode Settings ..... 12
  - 9.8 Using an Ethernet Connection with the Default Address ..... 13
  - 9.9 Establishing a new Static IP Address ..... 14
  - 9.10 Setting DHCP Mode ..... 15
  - 9.11 Using 3rd Party Controllers ..... 15
- Warranty ..... 16

## 1. Introduction

---

The Marshall VMV-402-SH is ideal for presentation systems, control rooms, and remote productions by providing seamless switching between four selectable inputs. Inputs can be a combination of mixed formats and frame rates. Simultaneous output is provided via 3G SDI and HDMI. The SDI output supports up to 1080p while the HDMI output may be scaled up to UHD. The Robust design makes the 402 at home on any rack mount or “throw-down box” application.

Inputs are automatically scaled / rate converted to match the selected output format. Mixed input formats and frame rates are easily accommodated. Output formats up to 1080p50/60 for SDI and UHD 50/60 (4:2:0 sampling) for HDMI are available.

## 2. Features

---

- Four 3G/HD/SD-SDI Inputs
- One 3G/HD/SD-SDI Output
- One HDMI Output
- Select each channel full screen or all four as quad display
- Seamless switching between inputs
- Audio bar overlay in full screen mode
- Tally function in quad mode
- Remote operation via Ethernet, IR or USB
- Supports Static or DHCP addressing
- Firmware upgradeable via USB

## 3. Applications

---

- 4 x 1 switcher for remote productions or AV applications
- Format “fixer/converter”. Accepts mixed formats and conforms to a selected output format
- Monitor four sources in ‘quad’ mode. Take any quadrant “full” instantly.
- Use HDMI Output for local monitoring while SDI output transmits images up to 100 meters.
- Use as Mini Multi-viewer with active tallies. Tallies triggerable by GPI.

## 4. Package Contents

---

- |                            |                        |
|----------------------------|------------------------|
| • 1x VMV-402-SH            | • 1x UL AC power cord  |
| • 2x 1U rack mounting-ears | • 1x IR Remote Control |
| • 1x 24V 5A power adapter  | • 1x IR Receiver       |

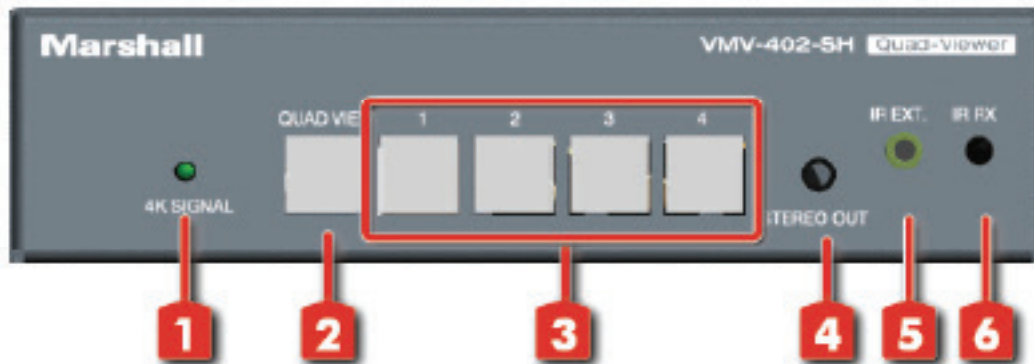
## 5. Specifications

<b>Model Name</b>	VMV-402-SH Quad-viewer/Switcher
<b>Role of Usage</b>	Quad-viewer or 4x1 Video Switcher
<b>Video Input Support</b>	[3G] 1080p @50/59.94/60Hz (4:2:2) [HD] 720p @50/59.94/60Hz, 1080i @50/59.94/60Hz, 1080p @24/30/60Hz
<b>Audio Pass Through</b>	Embedded surround sound (up to 7.1ch) or stereo digital audio
<b>Input</b>	4x BNC [SDI]
<b>Program Output</b>	1x HDMI + 1x BNC(SDI)
<b>HDMI connector</b>	Type A [19-pin female]
<b>RJ-45 connector</b>	WE/SS 8P8C
<b>ESD Protection</b>	Human body model — ±12kV [air-gap discharge] & ±8kV [contact discharge]

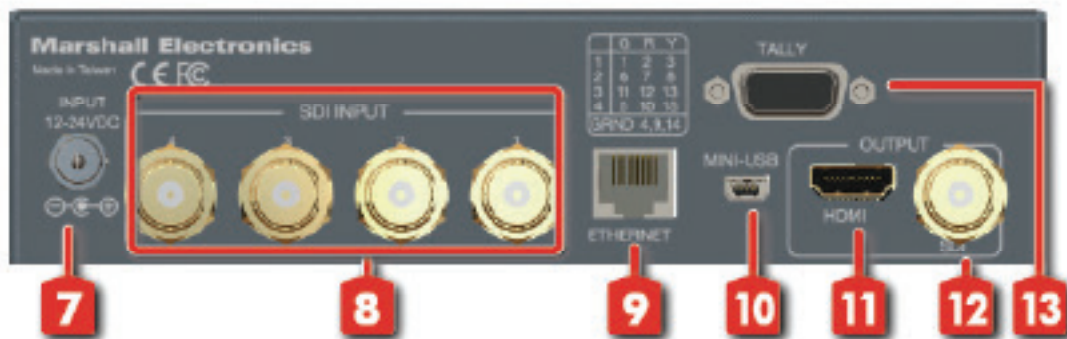
<b>Mechanical</b>	
<b>Housing</b>	Metal enclosure
<b>Mounting</b>	1U rack-mounting case with ears
<b>Dimensions [L x W x H]</b>	8.25" X 7" X 1.75" 209mm X 178mm X 44.5mm
<b>Weight</b>	1Kg (2.2 lbs) with rack ears
<b>Power supply</b>	12 - 24 Volts DC
<b>Power consumption</b>	12 Watts nominal 0.5 amp at 24 volts 1 amp at 12 volts
<b>Operation Temperature</b>	0~40°C [32~104°F]
<b>Storage Temperature</b>	-20~60°C [-4~140°F]
<b>Relative Humidity</b>	20~90% RH [no condensation]

## 6. Panel Descriptions

### Front Panel



### Rear Panel

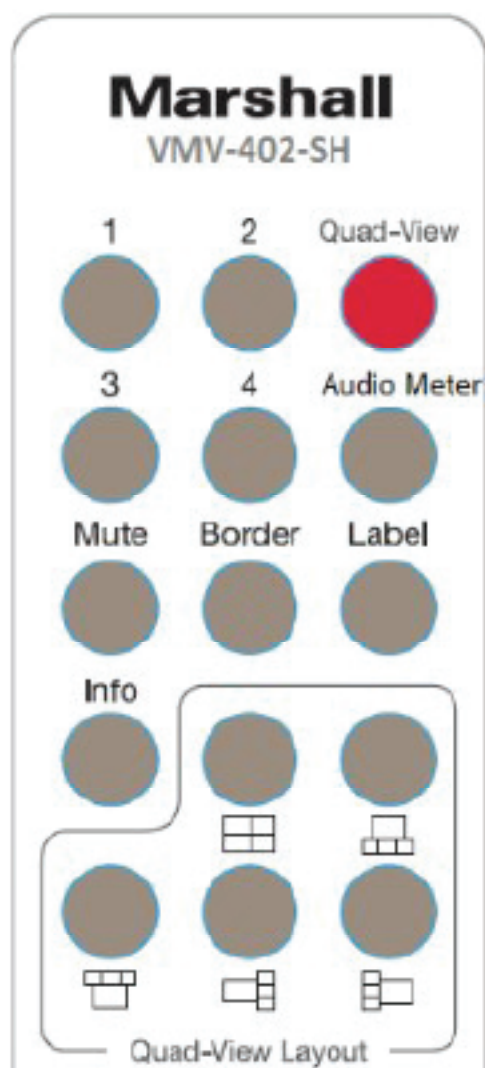


1. **4K Signal LED:** Lighted when output is set for 4K when HDMI output is set to UHD format (HDMI output).
2. **Quadview Button:** Changes output to quad view mode.
3. **3. Input Select Buttons:** Selects between sources. The button will illuminate when source is selected.
4. **Stereo out:** Stereo audio output.
5. **IR Extension:** 3.5mm jack for IR extension cable.
6. **IR Sensor:** IR sensor for receiving commands from IR remote.
7. **DC 24V Input:** Connects to the +12V or +24V DC power supply unit.
8. **Source 1-4:** 3G-SDI inputs.
9. **Ethernet:** Ethernet control port.
10. **Mini-USB Input:** USB control / update port.
11. **HDMI Output:** Program Out.
12. **SDI Output:** Program Out.
13. **Tally GPI connector**

## 7. Hardware Installation

1. Connect display, recorder, etc. to SDI or HDMI output of the VMV-402-SH
2. Connect the SDI input sources to the inputs of VMV-402-SH
3. Securely attach the provided supply unit to the locking power jack
4. Use IR remote or computer software to switch between input channels

## 8. IR Remote Control



Button	Function
1	SDI input 1
2	SDI input 2
3	SDI input 3
4	SDI input 4
<b>Quad-View</b>	Select quad mode output
<b>Audio Meter</b>	Toggles audio meters on/off (Not on quad output)
<b>Mute</b>	Toggles audio pass through on/off
<b>Border</b>	Toggles quad mode border on/off
<b>Label</b>	Toggles quad mode labels on/off
<b>Info</b>	Show current status on program output Hold 5 seconds to change DHCP mode
	Quad Layout 1
	Quad Layout 2
	Quad Layout 3
	Quad Layout 4
	Quad Layout 5

## 9. Configuration and Remote Operation

A control application is available for download from the Marshall-USA website at:

[http://www.marshall-usa.com/software/VMV-402-SH-V4\\_4.zip](http://www.marshall-usa.com/software/VMV-402-SH-V4_4.zip)

This application runs under Windows OS and provides several functions:

- Firmware Update
- Setup and Configuration
- Remote Operation via USB
- Remote Operation via Ethernet

### 9.1 Installing the application

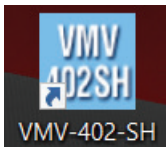
Please follow the steps in order below.

1. Download the VMV-402 update file from the Marshall-USA website to a folder you can easily find on your computer. Unzip the file there.
2. If there is a previous version of the VMV-204-SH Control App installed on this computer, please uninstall it before continuing.
3. Connect a “USB type A to USB mini cable” between the computer and the switcher (USB micro cables will not fit)
4. Double click on the file that was unzipped to begin the installation.  
**Important:** Make sure to check the box “Create a Desktop Icon” during the installation

### 9.2 Updating the Firmware

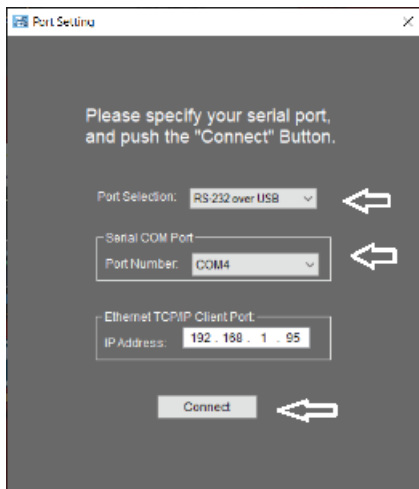
*It is strongly recommended that the firmware in the VMV-402-SH be updated before using the product.*

1. Double-click on the new desktop icon.

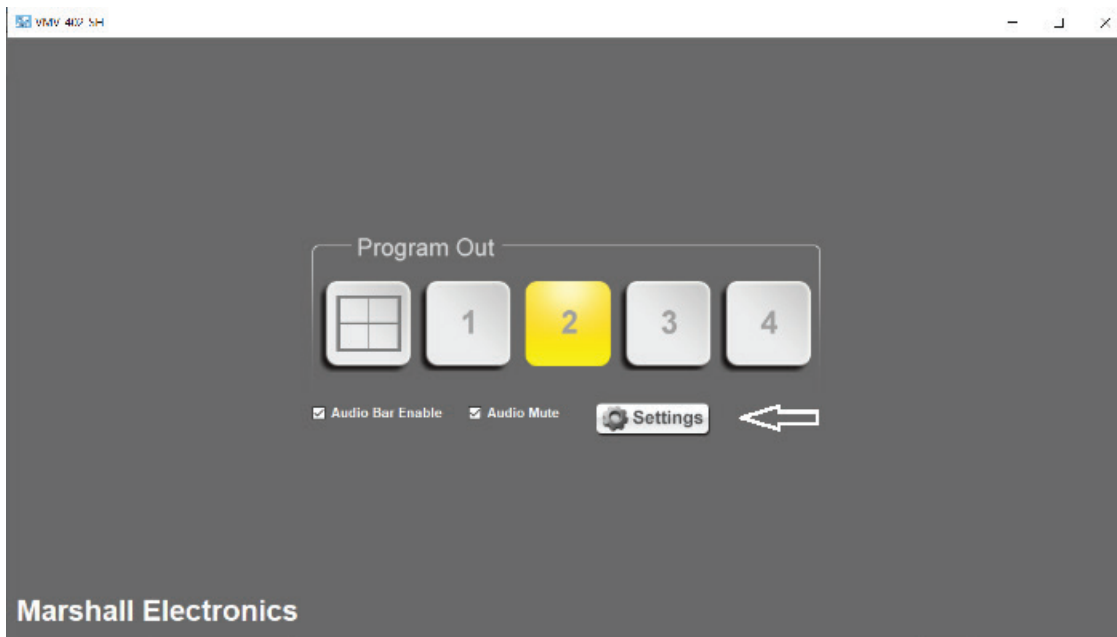


2. The Port Setting page will appear.
3. Check that “RS-232 over USB” is selected and that a COM Port number is available.
4. If no COM port appears it is likely that Windows has not installed the latest drivers.
5. They are available from Prolific at this address; [https://www.prolific.com.tw/US/ShowProduct.aspx?p\\_id=223&pcid=126](https://www.prolific.com.tw/US/ShowProduct.aspx?p_id=223&pcid=126).
6. Select PL2303 Driver Installer. When there are several COM Ports available, the one at the bottom of the list is the most likely one.

7. Select the COM Port. Ignore the IP Address, it has no function in this process.



8. Click on the Connect button.



9. The Main page will appear. Click the Settings button.



10. Click on the Utilities Tab on the Settings page
11. Then click on Firmware Update

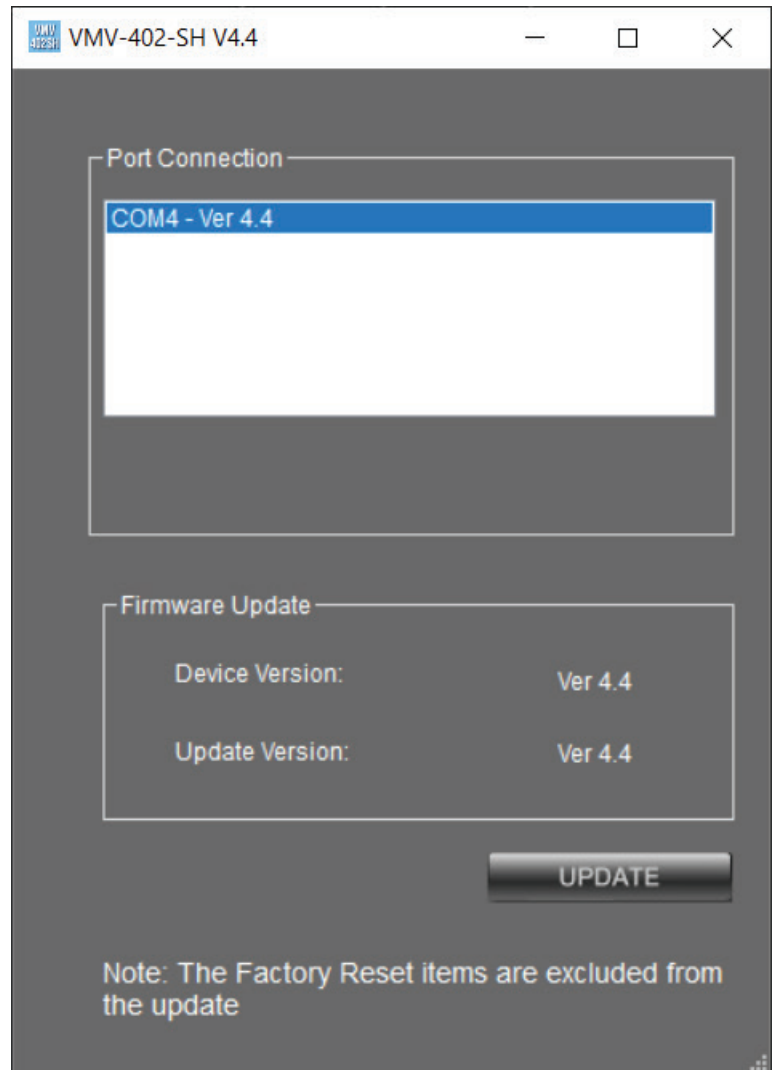


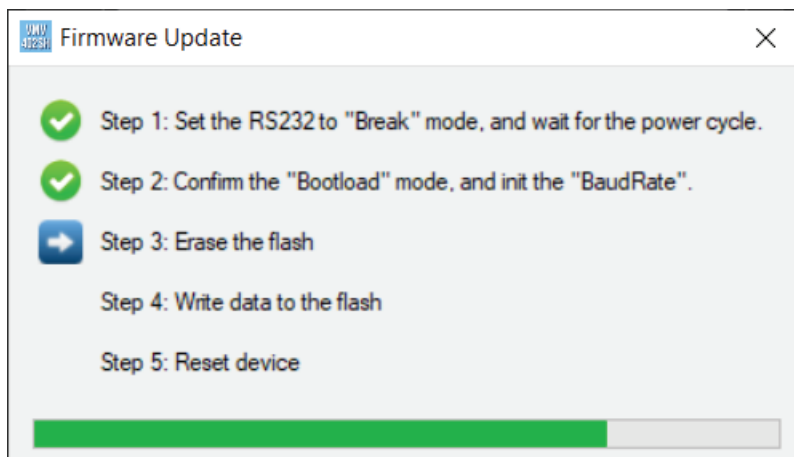
The Update Page will appear.

12. Please confirm that the Update Version is newer or the same as the existing Device Version
13. Click on the Update button to begin the update process.
14. A short countdown will appear.

The NOTE at the bottom of the page means that user preferences like IP address, Quad mode labels, etc. will not be changed during the update process.

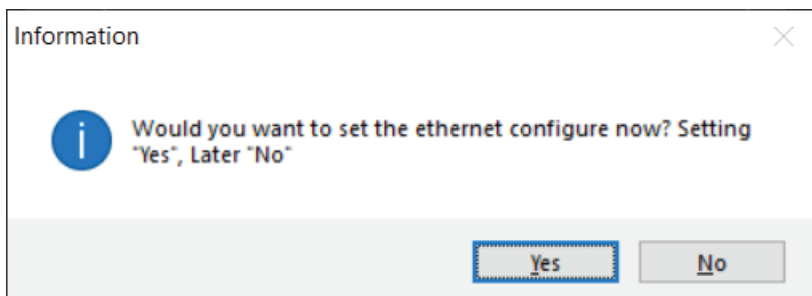
The Update process page will appear next





**Important:** The VMV-402-SH will restart at least twice during the update process.

Please allow at least 3 minutes from the time the process starts until you use the switcher as background processes may still be completing.



Select **Yes** to set a static IP address for the VMV-402-SH ethernet connection.

Select **No** to skip this step at this time.

**Manually** restart the VMV-402-SH (remove power) also close restart the control app.

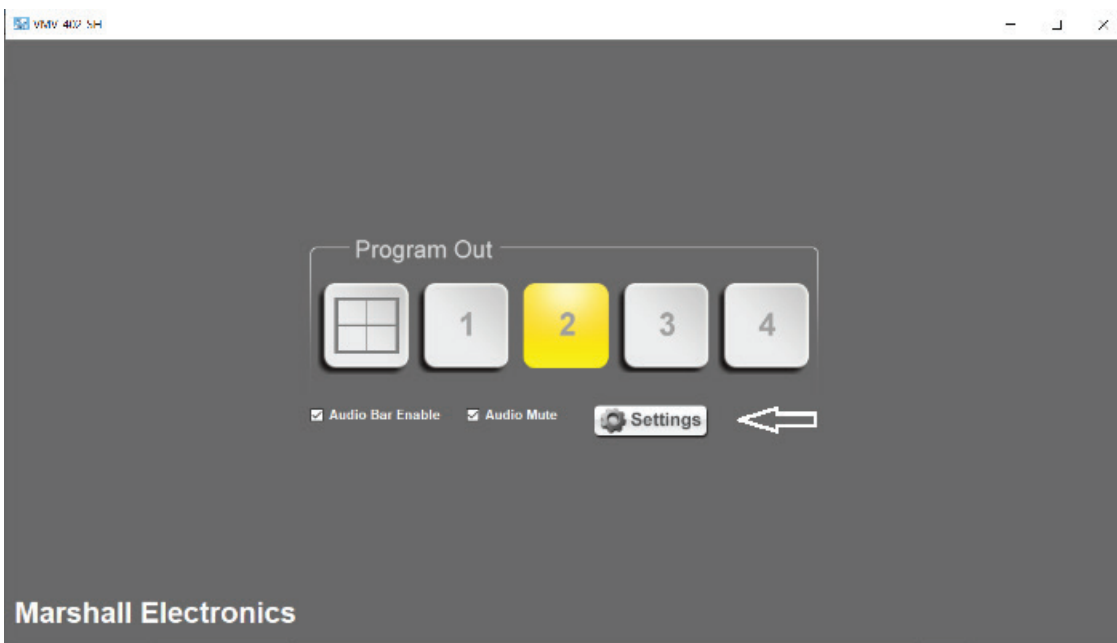
Refer to the Operations Manual to configure the VMV-402-SH.

## 9.3 Setting Up the VMV-402-SH for the First Time

Configuring the VMV-402-SH the first time is most easily done using the USB connection and running the control application by following the steps as described above. It is recommended to use this method of connection BEFORE attempting an Ethernet connection.

## 9.4 Most Common Settings

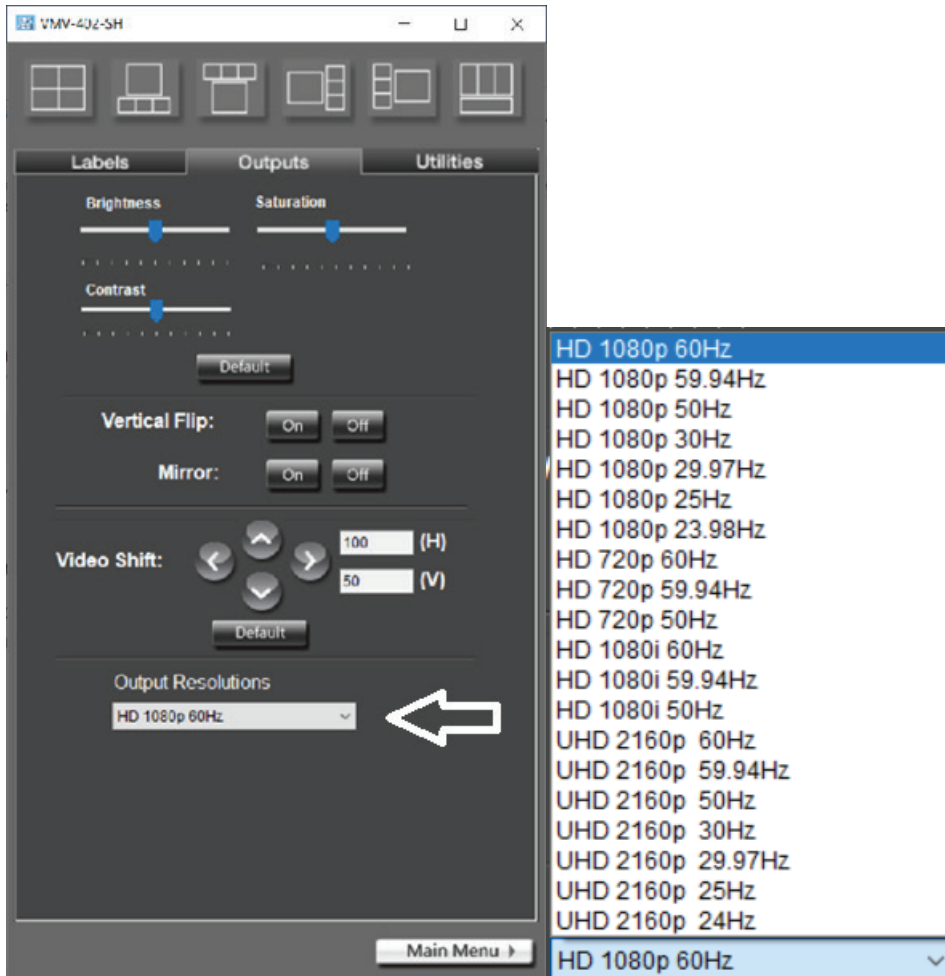
Easily the most important setting is to establish the system output **video format** and frame rate. From the main menu, click **Settings**.



## 9.5 Select the Outputs Tab

At the bottom, click on the **Output Resolution**.

pull-down window and select an output format and frame rate.



All incoming video sources will be converted to this choice.

**Special Note:** When a UHD format is selected, it applies to the HDMI output only. The SDI output will be 1080p at the same frame rate.

## 9.6 Other Settings on this Page

**Vertical Flip:** Turn picture upside down

**Mirror:** Reverse picture left & right

*These two settings affect the entire output frame including Quad mode.*

**Video Shift:** Move output image Up/Down and Left/Right

Horizontal position may be moved in 200 increments. 100 is default center.

Vertical position maybe moved 100 increments. 50 is default center.

Click the Default button to reset both horizontal and vertical positions.

**Brightness, Saturation and Contrast:** Adjust video settings to match a projector or other display. These settings affect the entire output image including Quad Mode. Click the Default button to set all three back to normal.

## 9.7 Quad Mode Settings

Clicking on the Labels tab brings all settings for Quad Mode onto one page.

The icons across the top of the page represent the 6 different available Quad Mode patterns. Simply click on one of these to change the Quad pattern.

Each window in Quad Mode may have its own label. The labels may be independently set to one of six locations within the window.

Labels may contain up to 14 characters, numbers and symbols. To create a new label simply type over the existing label then click the Apply button.

If it is desired to have a clean “quad split” effect, all labels may be turned off by using the **Label: On/Off** buttons at the bottom of the page.



## 9.8 Using an Ethernet Connection with the Default Address

The VMV-402-SH maybe be setup with a **Static** (fixed) IP address or an automatically assigned IP address using DHCP mode. To use the control app in **DHCP** mode it should be connected to the unit using USB or Static Ethernet connection first. In this way, the app “learns” the specific MAC address of the unit and will be able to find it on a network.

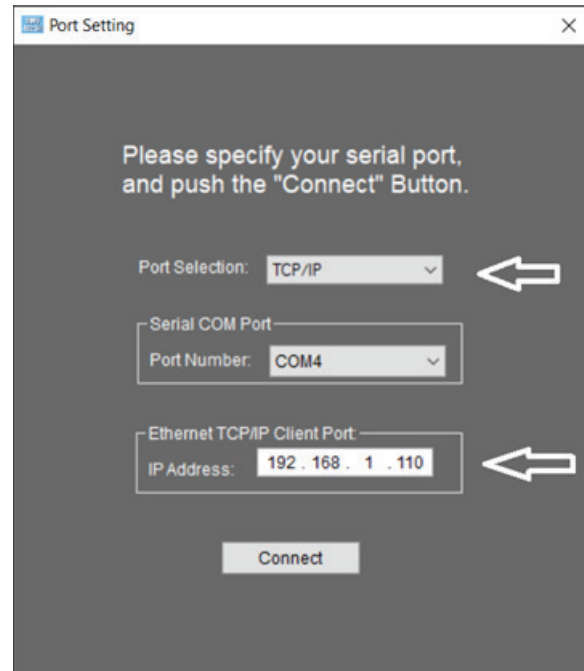
The unit ships in **Static** address mode with IP address 192.168.1.110.

If no other device on the network has this address, it may be connected directly and accessed by the control application.

From the **Utilities tab**, select **Port Setting** then select **TCP/IP** and confirm that the

default address: 192.168.1.110 is displayed.

Click the **Connect** button and the Main page should appear shortly.



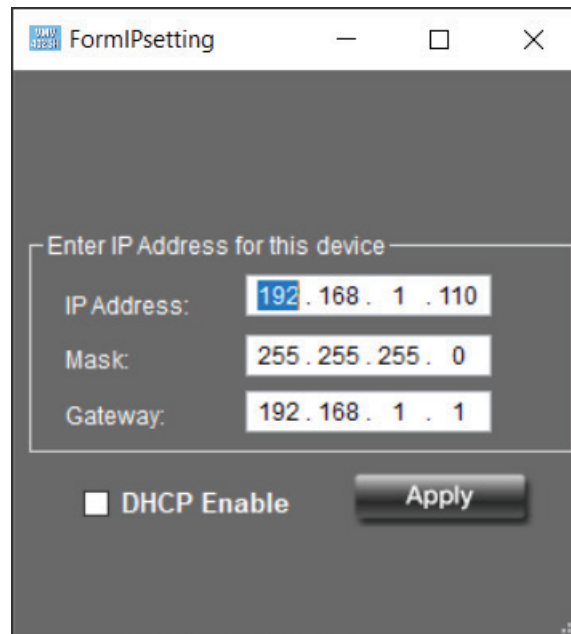
## 9.9 Establishing a New Static IP address

To change the Static address to a custom Static address, from the **Utilities** tab, first select **IP Setting** then fill out the fields for the new **IP Address**, **Subnet Mask** and **Gateway**. Confirm that **DHCP Enable** is **NOT checked** then click the **Apply** button.

At this point, the VMV-402-SH will restart (indicated by all front panel buttons lighting). Close and restart the control app. Allow at least one full minute before attempting to connect using the new address using the method described above.

The new address will need to be manually entered in the Port Setting window

**Note:** The Factory Reset function does not change the IP address. In other words, the new address is now the default address.



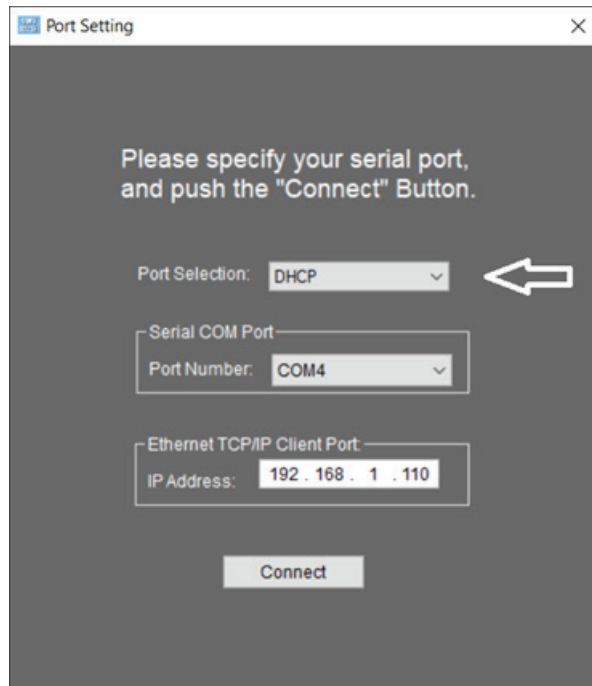
## 9.10 Setting DHCP Mode

The VMV-402-SH may be operated in DHCP mode. That is, the address is not Static but is, instead, set automatically by a router on the network. When DHCP mode is enabled, the current IP address may change. As mentioned in the sections above, it is best to connect to the unit first with a Static address. In this way, the control app learns the specific MAC address of this particular unit. Once it knows the MAC address, the control app will be able to find the device on a network even if the IP address has been changed by a router.

The procedure to change to **DHCP** mode is the same as setting a **Static** address except that the **DHCP Enable** box must be checked before clicking the **Apply** button.

At this point, the VMV-402-SH will restart (indicated by all front panel buttons lighting). Close and restart the control app. Allow at least one full minute for the mode change to complete.

On the Port Setting page, change **Port Selection** to **DHCP** and click **Connect**. At this point, the IP Address shown is unrelated to the address that is actually in use, the window does not update automatically.



## 9.11 Using 3rd Party Controllers

The VMV-402-SH may be controlled remotely via Ethernet, USB or IR optical.

Control codes and operational tips may be found on the Marshall-USA.com website at:

<http://www.marshall-usa.com/pdf/VMV-402-Remote-Control-Protocol.pdf>



## Warranty

---

For Warranty information please refer to Marshall website page:

<https://marshall-usa.com/company/warranty.php>

# Marshall

20608 Madrona Avenue, Torrance, CA 90503

Tel: (800) 800-6608 / (310) 333-0606 • Fax: 310-333-0688

**[www.marshall-usa.com](http://www.marshall-usa.com)**

[support@marshall-usa.com](mailto:support@marshall-usa.com)