

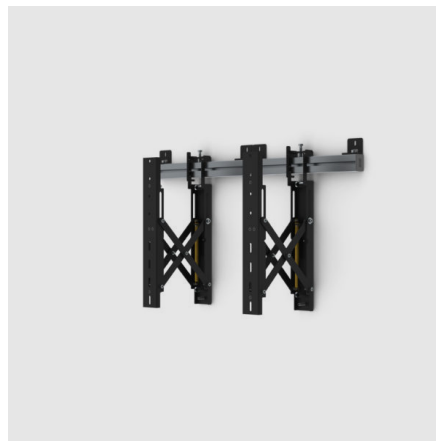
MULTI DISPLAY WALL +



Look at that smart "Push and access"!

An easy way to mount an adjustable video wall

Build a video wall easily or place the screens in a row – and choose any number or design. It's simply a case of choosing as many modules as you need. Each module is supplied as a complete package with all necessary components, and can be set up in three easy steps. The solution makes it easy to place the screens exactly in line and allows edge-to-edge mounting for a perfect result. If you build a video wall you will appreciate a smart and economical finesse: the "Push" function that pushes a screen forwards to give easy access for service and/or exchange while all other screens remain in operation.



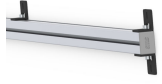
ARTICLE NUMBER

PW010020
SMS Multi Display Wall +

INFO

PLACEMENT	Wall
ROTATION	Landscape
LOCKABLE	Yes
MULTI DISPLAY	Yes
VESA HORIZONTAL	100 - 900
VESA VERTICAL	100 - 400
MAX WEIGHT [KG]	45
SCREEN SIZE	37-60"
WARRANTY [YEARS]	5

ACCESSORIES



MULTI DISPLAY WALL PILLAR - 1X2000 MM

PW010016

MULTI DISPLAY WALL PILLAR - 2X2000 MM

PW010006