



# HD 26 PRO

Broadcast

Sennheiser electronic GmbH & Co. KG

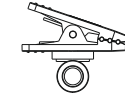
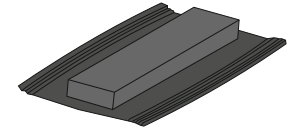
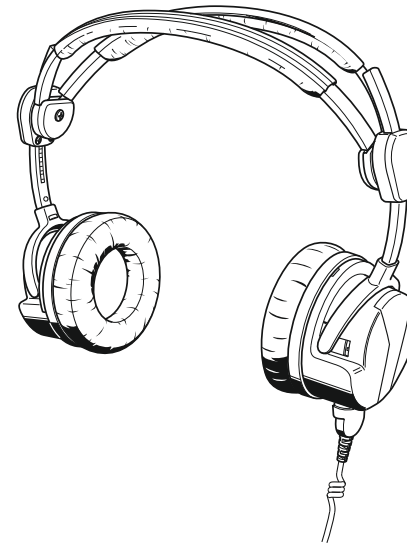
Am Labor 1, 30900 Wedemark, Germany  
www.sennheiser.com

Printed in Germany, Publ. 03/21, 587494/A01

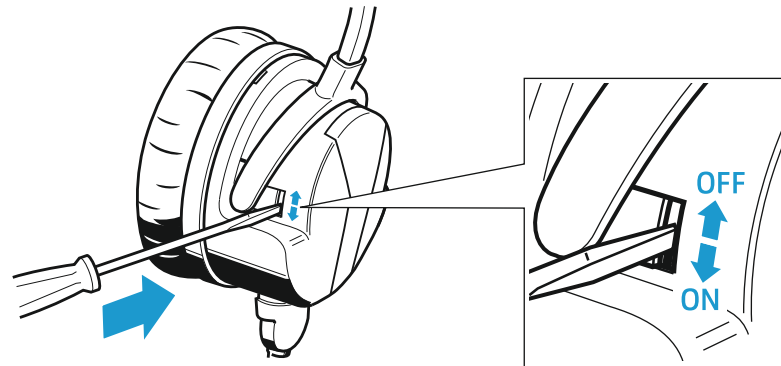
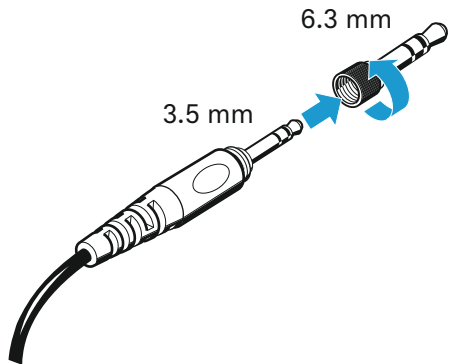
SENNHEISER

- Quick Guide
- Kurzanleitung
- Guide de démarrage rapide
- Guida rapida
- Instrucciones resumidas
- Instruções resumidas
- Beknopte gebruiksaanwijzing
- Krótká instrukcja obsługi
- Snabbguide
- Kort vejledning
- Pikaohje
- Σύντομες οδηγίες
- Kısa Kılavuz
- Краткая инструкция
- 快速指南
- 快速使用指南
- クイックガイド
- 요약 안내서

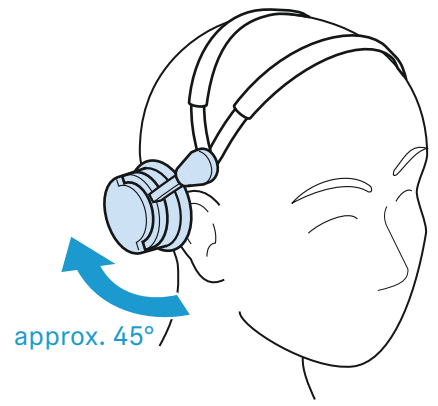
## In the box



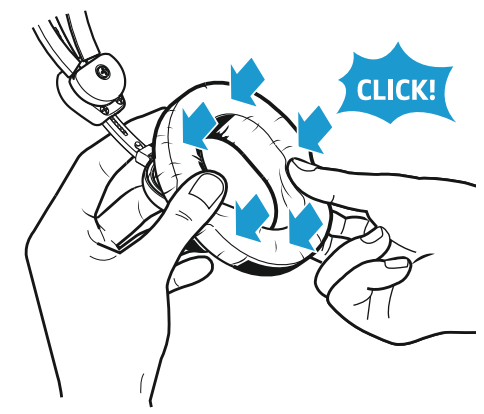
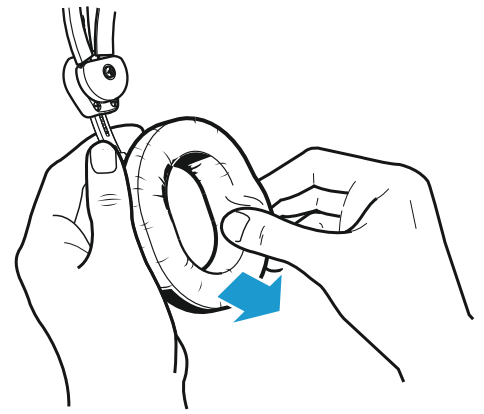
## Setup



**Use**



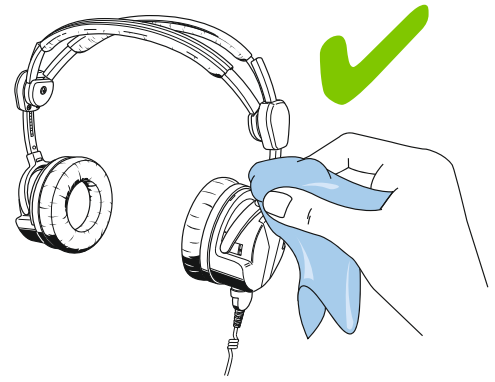
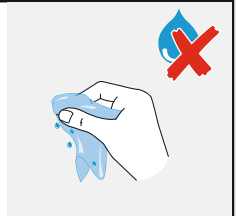
**Ear cushions**



**Specifications**

Transducer principle	dynamic, closed
Ear coupling	supra-aural
Frequency response	20 to 18,000 Hz
Impedance	100 Ω stereo
Characteristic SPL	105 dB SPL at 1 kHz, 1 mW 115 dB SPL at 1 kHz, 1 V
Max. SPL	ActiveGard switched on: 105 dB SPL at 1 kHz ActiveGard switched off: 128 dB SPL at 1 kHz, 200 mW
THD	< 0.5 % at 1 kHz
Contact pressure	approx. 3.9 N
Temperature range	operation: -15 °C to 55 °C storage: -55 °C to 70 °C
Weight without cable	approx. 180 g

**Cleaning**



**Headband**

