

SONY

BRAVIA™ 4K HDR Professional Displays

Innovative displays designed for business

55"-75"
XH9-series

FWD-55X95H/T
FWD-65X95H/T
FWD-75X95H/T



androidtv



Extron



logitech



4K HDR picture quality

Bring the incredible depth and quality of 4K HDR resolution to your organisation with BRAVIA 4K Professional Displays, available in 55"-75" screen sizes.

Superior displays designed for business

Advanced control, professional mode, optional interactive compatibility, 18/7 operation and an embedded HTML5 platform for easy digital signage creation; our BRAVIA 4K Displays are designed to suit all your professional needs so you always present a clear image.

Professional design

Our line-up offers all the technological performance and style you'd expect from BRAVIA, powered by the latest X1 enhanced processor. The 4K LCD panel produces four times the pixels of Full HD for outstanding picture quality, while the ultra-slim design enhances any corporate or retail environment.

Do more with our BRAVIA solutions

Look no further with BRAVIA. Our XH9 range features a number of fantastic built-in and optional solutions to customise your BRAVIA exactly the way you want. From meeting room solutions, Manage for TEOS, Connect for TEOS, TDM Digital Signage, Smart Automation System and the Applications Store, without the need for any external devices or players.

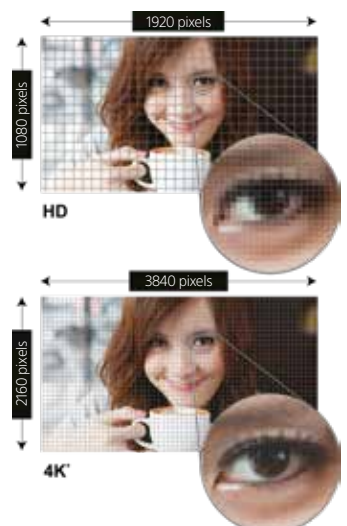
Key Features

Higher contrast, higher brightness

With the Full Array Local Dimming, specific sections of the screen can be incredibly bright while other areas remain pitch black so you get the best contrast possible, in addition, light areas in the image receive a boost in backlighting, creating brilliant peaks of brightness.

4K image resolution (3840 x 2160 pixels)

4K offers four times the detail of Full HD, with a resolution of over 8 million pixels bringing extra clarity to corporate display, education and digital signage applications.





Ultimate Picture Quality



Spectacularly lifelike 4K images

Our most powerful ever Picture Processor X1™ Ultimate features Object-based Super Resolution, Object-based HDR remaster and Super Bit Mapping™ 4K HDR for exceptionally detailed, realistic pictures with rich colour and ultra-low noise

Improve content quality with Reality Creation

This high picture quality engine takes Full HD content much, much closer to 4K Ultra HD quality. Whether it's a presentation to clients or engaging digital signage, you'll get the best picture possible.

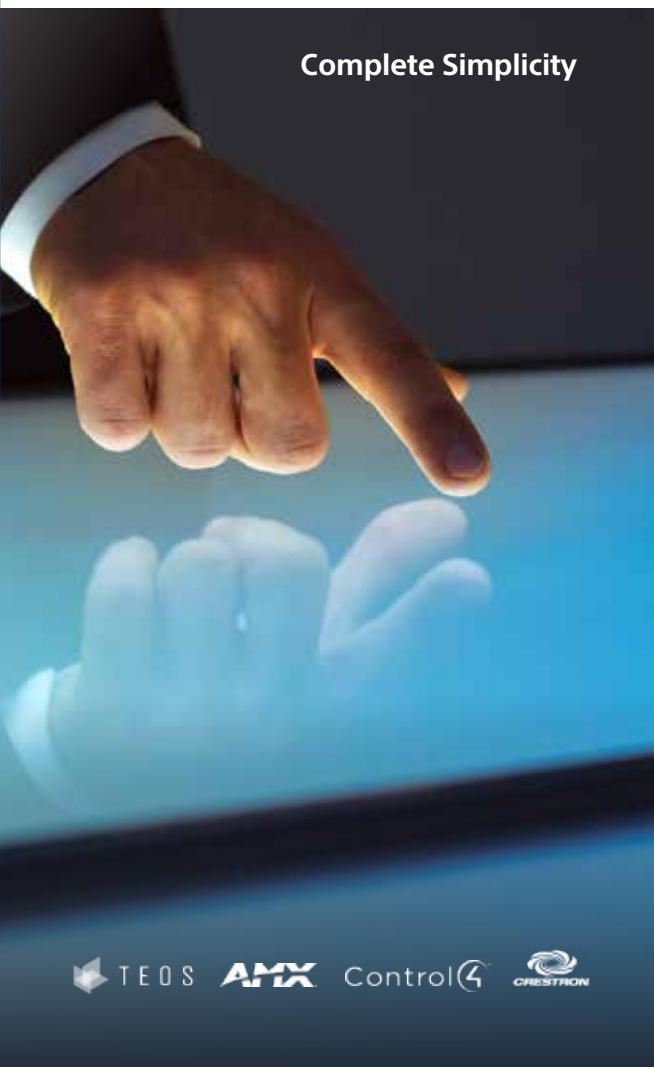
Easily create digital signage

Integrated support for HTML5 makes it easy to produce compelling digital signage, with no extra hardware or prior training needed. Combine graphics, text, 4K video and live web content to create attractive signage in minutes.

Compatible with High Dynamic Range (HDR)

View a wider range of brightness levels with HDR, the emerging video format that allows content creators to expand their range of creativity.

Complete Simplicity



Installation friendly

The slim, stylish display offers a wide range of mounting options, is VESA compliant and integrates colour neatly into any corporate, retail or educational environment.

Automatic on/off feature

Easily programme your BRAVIA with the On Timer feature to automatically turn your BRAVIA on or off.

Do more with Android TV

Discover a world of apps and online content powered by Android TV. Use Voice Search to find content easily with no typing.

Professional Mode

There's now more control to disable input or remote control, remove labels and block buttons; customise and store display settings and features, add security then copy them easily from display to display via USB flash memory.

The total touchscreen solution

Turn your BRAVIA into an interactive touchscreen with our IR and capacitive technology overlays. Designed to fit seamlessly onto the BRAVIA screen, it's easy to set up and allows 10 multi-touch points or more for greater interaction. Contact your local Sony dealer for more information.



Bring the incredible depth and quality of 4K HDR resolution to your business

Ideal for:

Corporate presentations

Digital signage

Video conferencing

Education

Do more with BRAVIA

Built-in solutions

Meeting room solution

Standard and enhanced interface in meeting rooms with smart features, and efficient automated systems for input management. There's no need for extra controllers in the room and settings stay exactly as they have been programmed.

Media Player

Easily play images, videos and HTML content on your Pro BRAVIA from a USB flash drive.

Android Applications store

Endless possibilities to display what you need, without external devices, through dedicated applications.



Optional Solutions

Connect for TEOS

Great for collaborative working, Connect for TEOS allows smooth, speedy wireless screen mirroring from laptops, directly to BRAVIA Professional Displays. It's available as an easy-to-install app, with no extra hardware needed.

Manage for TEOS

Sony BRAVIA Professional Displays are fully compatible with Manage for TEOS. Intelligent workspaces can now have complete control of all of their connected devices and content in boardrooms, meeting rooms, offices, public areas and other locations. Plus, there's no player required.

Digital Signage Platform (TDM Digital Signage)

Create and generate your signage content simply and without limitation. This easy-to-use authoring tool lets you combine text, graphics, video, social media feeds and other live web content to produce dynamic marketing messages.



XH9-series Specifications

		FWD-55X95H/T	FWD-65X95H/T	FWD-75X95H/T
Display features	Screen Size (inch, measured diagonally)	55"(54.6")	65"(64.5")	75"(74.5")
	Brightness (cd/m ²)	760	670	670
	Native contrast ratio	5000:1		4000:1
	Dynamic contrast ratio	600000:1		
	Display resolution (H x V, pixels)	3840x2160		
	Panel type	VA		
	Dimming type	Local Dimming		
	Display device	LCD		
	Backlight type	Direct(Full Array LED)		
	Operation time	18/7		
Aspect Ratio	16:09			
Professional features	Professional Hidden Mode	Yes		
	HDMI auto wake-up	Yes		
	Multicast/ IPTV	Yes		
	Compatible with TDM Digital Signage/ TEOS Solutions	Yes		
	Operating System	Android 9.0 Pie		
	On-board Storage (GB)	16GB		
Display System	TV System (Digital Terrestrial)	DVB-T/T2		
	TV System (Digital Cable)	DVB-C		
	TV System (Digital Sat)	DVB-S/S2		
	Number of Tuners (Terrestrial/Cable)	1(Digital/Analog)		
	Number of Tuners (Sat)	2		
Network Features	Wi-Fi Direct	Yes		
	Wi-Fi Certified	Yes		
	Apple AirPlay	Yes*1		
	Chromecast built-in	Yes		
	Internet Browser	Vewwd		
	Codec for Home Network	MPEG1:MPEG1/MPEG2PS:MPEG2/MPEG2TS(HDV,AVCHD):MPEG2,AVC/MP4(XAVC S):AVC,MPEG4,HEVC/AVI:Xvid,MotionJpeg/ASF(WMV):VC1/ MOV:AVC,MPEG4,MotionJpeg/MKV:Xvid,AVC,MPEG4,VP8,HEVC/WEBM:VP8/3GPP:MPEG4,AVC/MP3/ASF(WMA)/LPCM/WAV/MP4AAC/FLAC/JPEG		
	Firmware update	Yes		
	Wireless LAN	Integrated		
Convenience features	USB playback codecs	MPEG1:MPEG1/MPEG2PS:MPEG2/MPEG2TS(HDV,AVCHD):MPEG2,AVC/MP4(XAVC S):AVC,MPEG4,HEVC/AVI:Xvid,MotionJpeg/ASF(WMV):VC1/ MOV:AVC,MPEG4,MotionJpeg/MKV:Xvid,AVC,MPEG4,VP8,HEVC/WEBM:VP8/3GPP:MPEG4,AVC/MP3/ASF(WMA)/LPCM/WAV/MP4AAC/FLAC/JPEG		
	HDMI-CEC	Yes		
	i-Manual	Yes		
	On Screen Clock	Yes		
	Sleep Timer	Yes		
	On/Off Timer	Yes		
Control specs	IP Control	Yes		
	Pro mode	Yes		
Inputs & Outputs	HDMI Signal	4096x2160p(24,50,60Hz), 3840x2160p(24,25,30,50,60Hz), 1080p(30,50,60,100,120Hz), 1080/24p, 1080i(50,60Hz), 720p(30,50,60Hz), 720/24p, 576p, 480p		
	HDCP	HDCP2.3(for HDMI1/2/3/4)		
	RF (Terrestrial/Cable) Connection Input(s)	1(Side)		
	IF (Satellite) Input(s)	2(Side)		
	Composite Video Input(s)	1(Side)		
	HDMI inputs total	4(4Side)		
	USB ports	2(Side)		
	Ethernet inputs	1(Side)		
	HDMI PC Input Format	640x480(31.5kHz,60Hz), 800x600(37.9kHz,60Hz), 1024x768(48.4kHz,60Hz), 1280x1024(64.0kHz,60Hz), 1152x864(67.5kHz,75Hz), 1600x900(55.9kHz,60Hz), 1680x1050(65.3kHz,60Hz), 1920x1080(67.5kHz,60Hz), 3840x2160p(30Hz), 3840x2160p(60Hz, 8bits)		
	PCMCIA Slot(s)	1(Top)		
Audio specifications	Speaker Position	Side Back + Down Firing		
	Audio Power Output	10W + 10W + 5W + 5W		
Video Specifications	Wide Mode	Auto/Wide zoom/Normal/Full/Zoom/14:9		
	4:3 Default	Yes		
	Video Processing	4K X-Reality PRO		
	4K Processor	Picture Processor X1 Ultimate		
	HDR (High Dynamic Range) compatibility	Yes(HDR10,HLG,Dolby Vision)		
Design Features	Cable Management	Yes		
	Frame color	Dark Silver		
	Stand Design	Premium Blade Stand		
	VESA® Hole Spacing Compatible	Yes		
	VESA® Hole Pitch(W x H)	30.0x30.0 cm		
Eco & energy saving	Energy Label Rating	B		
	Power Consumption	Standard: 166.0W	Standard: 200.0W	Standard: 247.0W
	Power Consumption (in Standby)	0.50W		
	Peak luminance ratio for EU	80%	75%	77%
	Mercury content(mg)	0.0		
	Power Saving Mode / Back Light Off Mode	Yes		
Dimensions	Display only (W x H x D)	Approx. 122.9x71.0x7.0 cm	Approx. 144.8x83.3x7.0 cm	Approx. 167.2x96.0x7.1 cm
	Display with Stand (W x H x D)	Approx. 123.0x77.9x31.0 cm	Approx. 144.9x90.6x35.3 cm	Approx. 167.5x104.8x41.5 cm
Weights (Approx.)	Display only	Approx. 16.8 Kg	Approx. 22.3 Kg	Approx. 33.1 Kg
	Display with Stand	Approx. 18.1 Kg	Approx. 23.7 Kg	Approx. 35.6 Kg
	Package Carton(Gross)	Approx. 25 kg	Approx. 32 kg	Approx. 47 kg
Optional accessories	Wallmount Bracket	SU-WL450(Terminal access limitation, refer to SU-WL450 product page), SU-WL850(Refer to Country/Area Handling Chart)		
Service and Warranty	Standard Warranty	3 Years with Advanced Exchange	3 Years with Advanced Exchange	3 Years with Advanced Exchange
	PrimeSupport 2 years extension reference	PSP.FDWXH9555.2X	PSP.FDWXH9565.2X	PSP.FDWXH9575.2X

*1: Available via future firmware update, Internet required

Optional accessories



CAB-VGAHDMI1
VGA to HDMI cable



SU-WL450/PSE
Wall Mount



Connect for TEOS license
TEC-SC100



Manage for TEOS licenses
TEM-CO10
TEM-MR10
TEM-DS10



TDM digital signage software licenses
TDM-DS1Y: 1 year
TDM-DS3Y: 3 years



Totems
TOT-XXX95H-IR10
TOT-XXX95H-CA10



Front Covers
FC-XXX95H/W
FC-XXX95H/WO



Touch overlays
TO-XXX95H-IR10
TO-XXX95H-CA10



Kiosks
KIO-XXX95H-IR10
KIO-XXX95H-CA10

*XX to be replaced by the display size.
Please find more accessories on our website.

PrimeSupport

All Sony BRAVIA Professional Displays sold into the EU, Norway and Switzerland come supplied with a 3 Year PrimeSupport pack, offering unique services and benefits, including:

- Freephone telephone helpdesk support (00 800 7898 7898) in 5 languages.
- A completely new replacement model rather than repair as standard.

In addition, optional PrimeSupport Plus packs can be purchased to add a 2 year extension of the standard 3 year PrimeSupport and to give long-term assurance of expert support, technical assistance for 5 years from purchase date.

PrimeSupport Pro

For full features visit
pro.sony/products/professional-displays

© 2020 Sony Corporation. All rights reserved. Reproduction in whole or in part without permission is prohibited. Features and specifications are subject to change without notice. All non-metric weights and measurements are approximate. 'Sony' and 'BRAVIA' are registered trademarks or trademarks of Sony Corporation. All other trademarks are the property of their respective owners.

Sony is the leading supplier of AV/IT solutions to businesses across a wide variety of sectors including, Media and Broadcast, Video Security, Medical, Digital Cinema and Displays. It delivers products, systems and applications to enable the creation, manipulation and distribution of digital audio-visual content that add value to businesses and their customers. With over 25 years' experience in delivering innovative market-leading products, Sony is ideally placed to deliver exceptional quality and value to its customers. Collaborating with a network of established technology partners, Sony delivers end-to-end solutions that address the customer's needs, integrating software and systems to achieve each organisation's individual business goals. For more information please visit www.pro.sony

Distributed by

SONY