



MX MASTER 3

Advanced Wireless Mouse

MX Master 3 is the most advanced Master Series mouse yet. It has been designed for designers and engineered for coders – to create, make and do faster and more efficiently with an all-new electromagnetic scroll wheel, app-specific workflow customisations and a crafted form designed for the shape of your palm.



ELECTROMAGNETIC MAGSPEED WHEEL

The electromagnetic MagSpeed wheel provides up to 90% more speed* and 87% more precision, ** while being very quiet.



TRACK ANYWHERE

4000 DPI Darkfield sensor means you can track virtually anywhere – even on glass.*** It's faster and 5x more accurate than the basic mouse.*



MULTI-DEVICE AND FLOW

Connect up to 3 devices via Bluetooth® or the included Unifying USB receiver. Flow allows you to work across multiple computers and operating systems – transferring files, images and folders in one fluid workflow.***



COMFORTABLE SHAPE

Perfectly sculpted shape for comfort, with intuitive thumb controls.



APP-SPECIFIC PROFILES AND BUTTON CUSTOMISATIONS

Speed up your workflow with predefined app-specific profiles and numerous customisation options**** Optimized for Adobe, Office, Browsing.



BATTERY

Full charge lasts up to 70 days, quick charge in 1 min for 3 hours of use with USB-C quick charging.

*Compared to regular Logitech mouse without an electromagnetic scroll wheel.

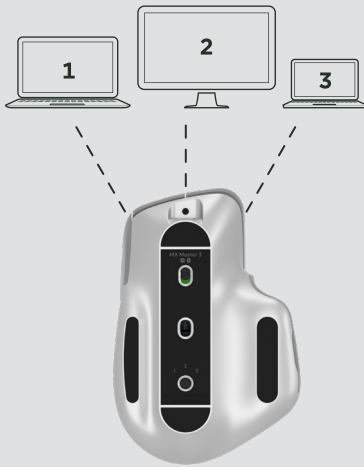
**Compared to Logitech MX Master 2S mouse with Logitech Options installed and Smooth Scrolling enabled.

***4mm minimum glass thickness

****Requires Logitech Options software, available at www.logitech.com/options.



logitech



ADVANCED CONNECTIVITY

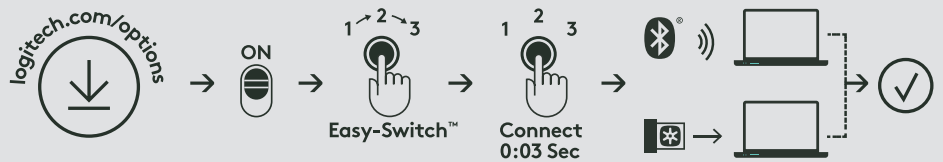
Dual Connectivity

Connect via a Unifying receiver* or *Bluetooth*® low energy technology

Easy-Switch™ Technology

Pair up to 3 devices and easily switch between them with the touch of a button

How to Connect



LOGITECH® OPTIONS™ SOFTWARE

Install Logitech® Options™ software to unlock a full range of possibilities. Customise buttons and actions to your needs.

Three menu tabs:

Mouse tab

Assign a variety of functions to your mouse buttons and thumb wheel

Point and Scroll tab

Customise your scrolling experience (smart hyper-fast scroll wheel and thumb wheel) as well as the pointer's speed

Flow tab (take multi-computer to a new level)

Cross-computer control (up to 3)

Copy/paste text, images and files between computers

| Product | MX Master 2S | MX Master 3 |
|---------------|---|--|
| Connectivity | Unifying & <i>Bluetooth</i> ® | Unifying & <i>Bluetooth</i>® |
| Battery life | Rechargeable (70 days) | Rechargeable (70 days) |
| Comfort | Sculpted right handed shape with full rubber coverage | Sculpted right handed shape with full rubber coverage |
| Tracking | Tracks on any surface, even glass (4,000 DPI) | Tracks on any surface, even glass (4,000 DPI) |
| Scrolling | Smart Hyper fast wheel + Thumb wheel | Smart Hyper Magspeed wheel + Improved Thumb wheel and buttons |
| Customization | Yes | Yes + Pre-defined Profiles |
| Easy-Switch | Yes (3 computers) | Yes (3 computers) |
| Flow support | Yes (3 computers) | Yes (3 computers) |
| Compatibility | Mac, Windows | Mac, Windows, Linux |