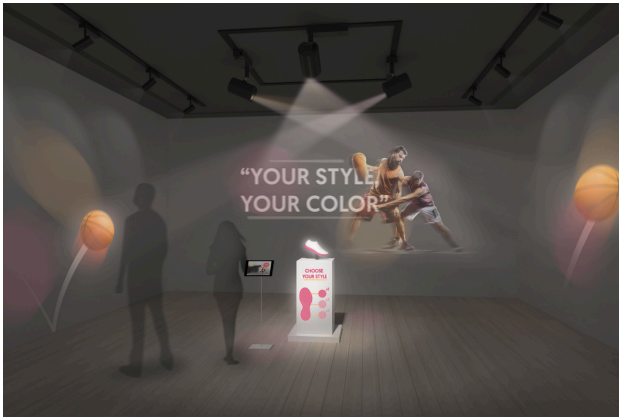


LightScene EV-105

DATASHEET / BROCHURE



2,000-lumen WXGA accent lighting projector in black, with a low visual noise design, ideal for retail displays, galleries and museums.

Add movement and life to your retail displays or exhibitions with a low visual noise projector that blends in beautifully to any environment, and blurs the line between lighting and projection with 2,000-lumen brightness and WXGA sharpness.

A discreet attention-grabber

The LightScene EV-105 allows you to create instantly appealing visuals with sharp WXGA resolution and 2,000-lumen brightness. Yet thanks to its low visual noise black casing, it can be used where a traditional projector would stand out, such as window displays and as part of exhibitions.

Simple, flexible implementation

A light, flexible design means the EV-105 can be installed in a variety of ways, from a traditional ceiling mount to a freestanding floor mount, or attached to an existing lighting track like a spotlight¹. It can also be mounted at and project from any angle, including portrait. The projector can be used as a traditional spotlight for when simple lighting effects are needed.

Easy to program and use

The EV-105 comes with Epson Projector Content Manager Software for quick, easy set-up without specialist installation. Playlists can easily be loaded via SD Card and changed using remote control by employees without the need for a computer. The projector can also use advanced techniques such as edge-blending to achieve stunning results in larger spaces that require multiple-unit installations.

Fit and forget reliability

A five-year, 20,000-hour warranty, coupled with Epson's durable, reliable inorganic phosphor wheel technology means that EV-105 projectors can be installed and forgotten about, and don't require regular maintenance.

KEY FEATURES

- **Discreet signage projector**
Low visual noise black casing won't grab the spotlight
- **Sharp, vivid projection**
2,000-lumen brightness and detailed WXGA resolution
- **Flexible installation**
Can be ceiling-mounted, floor-standing or attached to a lighting track
- **Easy playlist loading**
Playlist can be loaded from an SD Card without need for a computer
- **Fit and forget reliability**
Durable Epson technology supported by a five-year 20,000-hour warranty

EPSON[®]

PRODUCT SPECIFICATIONS

IMAGE

Color Light Output	2,000 Lumen- 1,000 Lumen(economy) In accordance with IDMS15.4
White Light Output	2,000 Lumen - 1,000 Lumen(economy) In accordance with ISO 21118:2012
Resolution	WXGA 2
Aspect Ratio	16:10
Contrast Ratio	2,500,000: 1
Laser Light source	20,000 hoursDurability High, 30,000 hoursDurability Eco
Keystone Correction	Manual vertical: ±45 °, Manual horizontal ±40 °
Portrait Colour Light Output	2,000 lm

OPTICAL

Throw Ratio	1.38 - 2.19:1
Zoom	Motorized, Factor:1 - 1.58
Projection Lens Zoom Ratio	1.38 - 2.19 : 1
Lens	Optical
Screen Size	30 inches - 133 inches
Projection Lens Focus	Motorized

ADVANCED FEATURES

Security	Wireless LAN security, Password protection
Other features	Digital zoom, Horizontal and vertical keystone correction, Quick Corner
Video Color Modes	Dynamic
Projector control	via: Crestron

GENERAL

Supply Voltage	AC 100 V - 240 V, 50 Hz - 60 Hz
Product weight	5 kg
Noise Level	Normal:34 dB (A) - Economy:22 dB (A)
Colour	Black

TECHNOLOGY

Projection System	3LCD Technology
LCD Panel	0.59 inch with C2 Fine

OTHER

Warranty	60 months Carry in or 20,000 h
----------	--------------------------------

LOGISTICS INFORMATION

SKU	V11H868140 V11H868141
EAN code	8715946647500
Country of Origin	China
Layer	2 Units

* Warranty offers are not available for all countries. Please contact your local Epson representative.

For further information please contact your local Epson office or visit www.epson-europe.com

Austria 01 253 49 78 333 Belgium +32 (0)2 792 04 47 Czech 800/142 052 Denmark 44 50 85 85 Finland 0201 552 091 France 09 74 75 04 04

(Cost of local call, operator charges may apply) Germany +49 (0) 2159/92 79 500 Greece +30 211 198 62 12 Hungary 06800 147 83 Ireland 01 436 7742

Italy 02-660321 10 (0,12 /min) Luxembourg +352 27860692 Middle East +9714 8872172 Netherlands +31 (0)20 708 5099 Norway +47 67 11 37 00

Poland 0-0-800 4911299 (0,16 zł/min) Portugal 707 222 111 Russia (095) 777-03-55 Slovakia 0850 111 429 South Africa (+2711) 465-9621

Spain 93 582 15 00 Sweden 0771-400135 (Mobilsamtal – 0,99 kr/min, Lokala samtal – 0,30 kr/min, Utlandssamtal – 0,89 kr/min) Switzerland 022 592 7923

Turkey (0212) 3360303 United Kingdom 0871 222 6702

Trademarks and registered trademarks are the property of Seiko Epson Corporation or their respective owners. Product information is subject to change without prior notice.

LightScene EV-105

WHAT'S IN THE BOX

- User's Manual Set
- Remote control incl. batteries
- Power cable
- HDMI Cable Clamp
- Cable cover
- Direct mount unit

OPTIONAL ACCESSORIES

- Floor Stand - ELPMB55B - EV-105
V12H888B10
- Lighting Track Mount - ELPMB66B - EV-115
V12HA32140

1. Floor stand and lighting track are purchasable options.

EPSON[®]