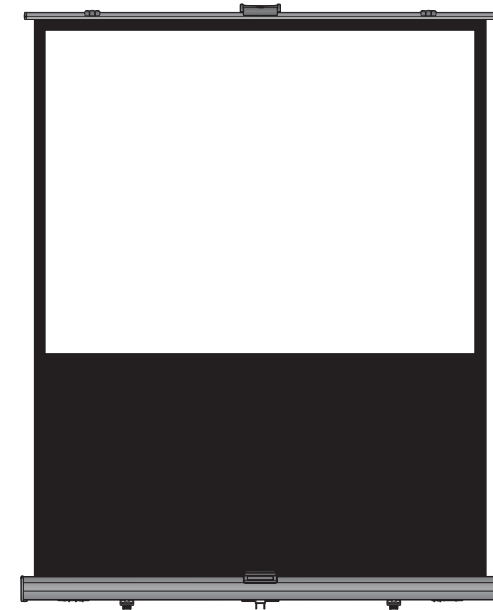




Installation Guide for Advanced Portable Self-Stand-X Screen



DELUXX ® Advanced Portable Self-Stand-X

Thank you very much for purchasing a DELUXX® screens.

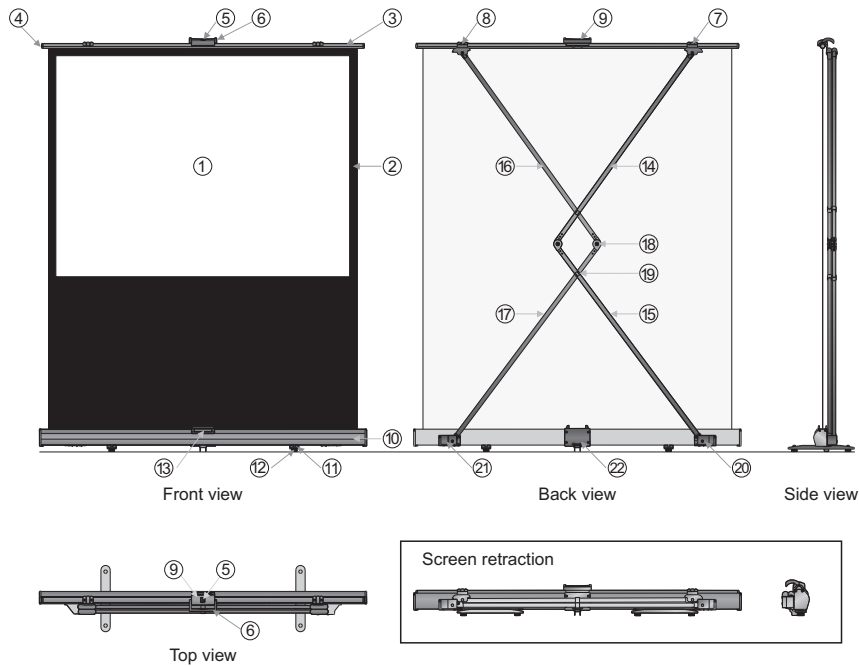
Please read the operating instructions carefully before installation and use. Keep the operating instructions in case you have any questions.

DELUXX® | one brand of celexon Europe GmbH
Gutenbergstraße 2 | 48282 Emsdetten | Germany
Tel: +49 2572 923 912 121 | Fax: +49 2572 923 912 199
Email: info@deluxx.com | www.deluxx.com



Description

Illustration



Part name

①	Fabric	⑫	Foot wheel
②	Fabric black border	⑬	Front base
③	Semicircle tube	⑭	Support lever
④	Rod	⑮	Support lever
⑤	Tube lock	⑯	Support lever
⑥	Handle	⑰	Support lever
⑦	Left bracket	⑱	Support lever joint
⑧	Right bracket	⑲	Support lever pipe
⑨	Handle base	⑳	Seat
⑩	Casing	㉑	Seat
⑪	Foot	㉒	Rear base

Warning

1. Don't expose the screen in wind.
2. For the flatness of the fabric, remember:
 - a) Don't touch the screen surface with hands.
 - b) Don't write or draw on the screen surface.
 - c) Don't poke screen fabric with finger or edge tools.
 - d) Clean the fabric with soft cloth and lukewarm water. Don't use any detergent or any diluent cleanser.
3. Lift up and retract the screen with even speed and force.
4. Retract fabric into the casing after display.
5. When retracting the screen, make sure the support lever joint is fastened into the support lever pipe.
6. Make sure the handle base is fastened and locked before carry.
7. In case of damage, the screen is recommended to be managed and operated by adults.



Ignoring the safety warnings may lead to injuries and/or damaging the product.



Retract the screen after every use. Leave it hanging for a long period may cause screen fabric loose



Avoid hanging anything on the screen as it may cause the screen to fall down.



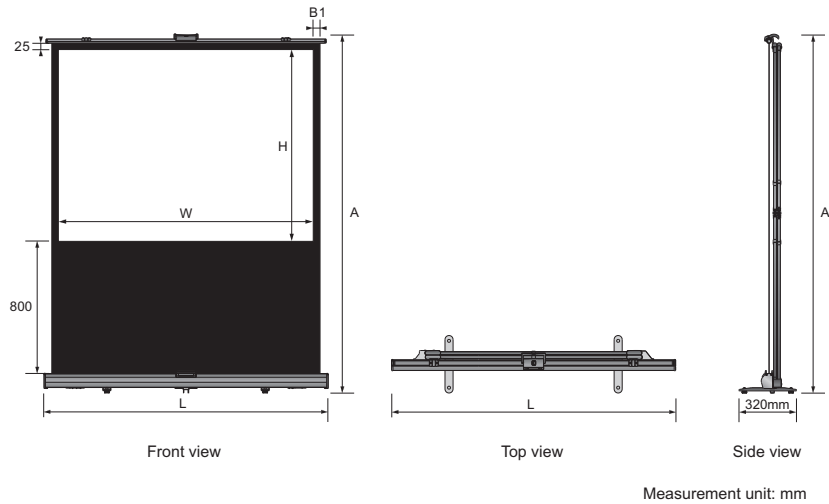
Please contact your local dealer for repairs or maintenance. Please contact our company if you have any further questions. Avoid taking apart the fixtures yourself. Loose parts may cause the screen to fall.

Do not take apart and replace with unknown parts. If there are any problems, please contact your local dealer. Product specifications are subject to change.

Specifications

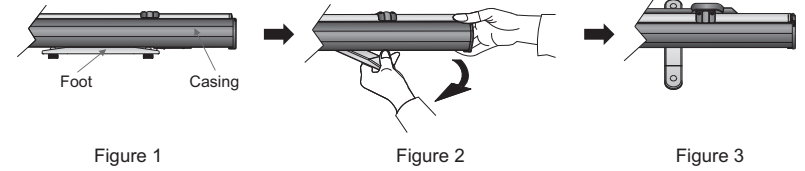
Format	Model	Specification (In)	Viewing area		Screen dimension		B1 (mm)	Net weight (kg)
			W (mm)	H (mm)	L (mm)	A (mm)		
4:3	60199	70"	1422	1067	1582	2047	35	7.4
	60200	84"	1707	1280	1867	2260	35	8.4
	60201	100"	2030	1520	2190	2390	35	9.9
16:9	60202	70"	1550	871	1710	1899	35	7.8
	60203	84"	1860	1045	2020	2143	35	8.7
	60204	92"	2030	1145	2019	2145	35	9.2

Note: Sizes and specifications are subject to change at any time. Refer to real product for exact data.
The tolerance for L is ± 5 mm.

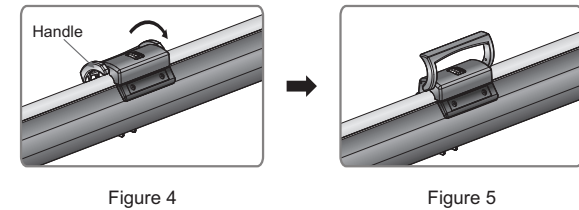


Open Screen

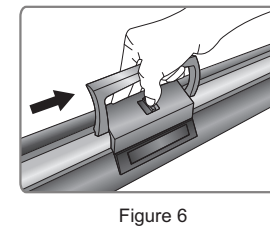
- Put the screen on the ground, in a proper position facing the projector. Turn the feet out until they are perpendicular to the screen casing (Figure 1 - 3).



- Pull up the handle as the arrow indicates below (Figure 4 - 5).



- Pull up the handle while using the thumb to release the tube lock as arrow indicates (Figure 6).



Retract screen

4. Pull up the screen with constant speed and stop at desired position for three minutes so that the screen can be installed (Figure 7 - 10).

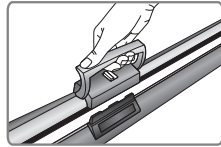


Figure 7

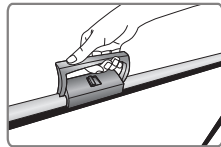


Figure 8

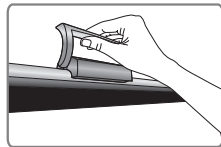


Figure 9

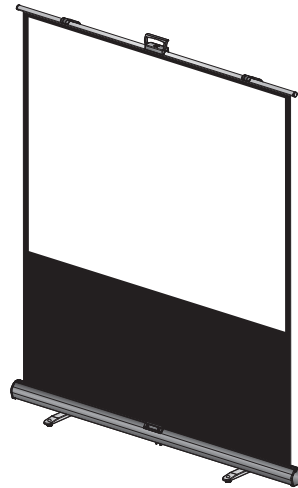


Figure 10

5. Adjust the foot wheel when the ground is not even. To be exact, clockwise rotation raises the foot while counterclockwise rotation lowers the foot, with limits of five circles or within 8mm (Figure 11 - 12).

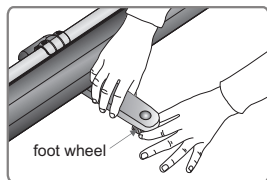


Figure 11

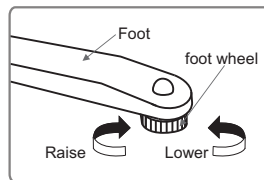


Figure 12

1. Grasp the handle and retract the screen into the casing till the handle base is firmly fastened in the tube lock (Figure 13 - 15).

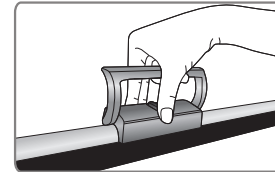


Figure 13

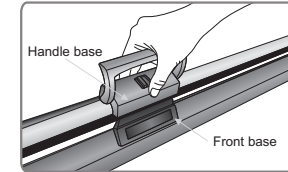


Figure 14

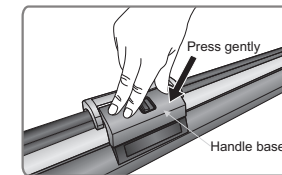


Figure 15

2. Rotate the feet in line with the casing. Retraction is completed (Figure 16 - 18).

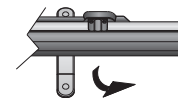


Figure 16

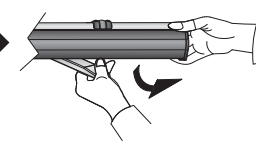


Figure 17

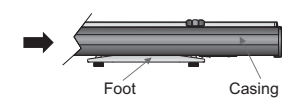


Figure 18