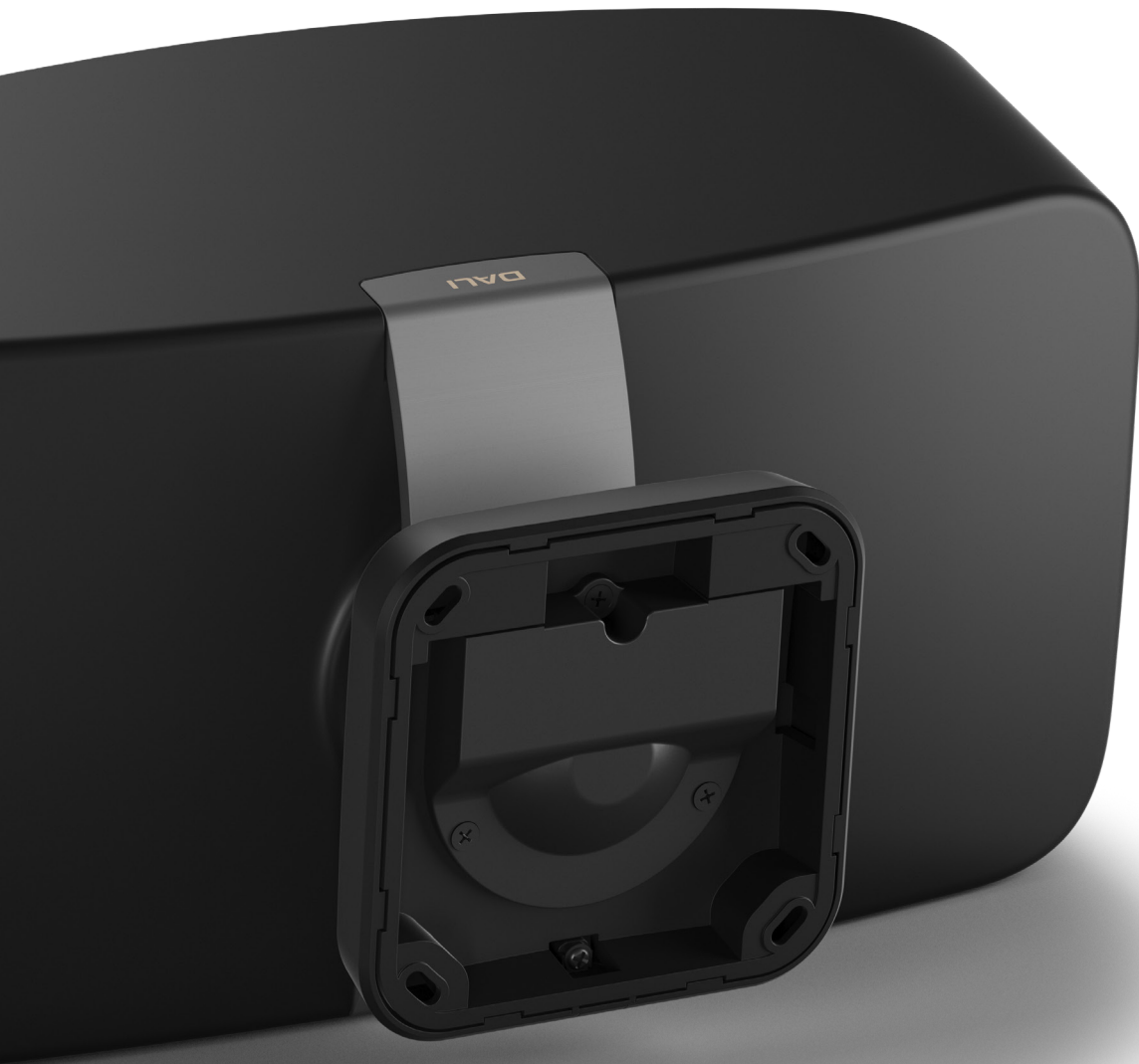


DALI GARDIAN OW 6

INSTALLATION MANUAL



IN ADMIRATION OF MUSIC



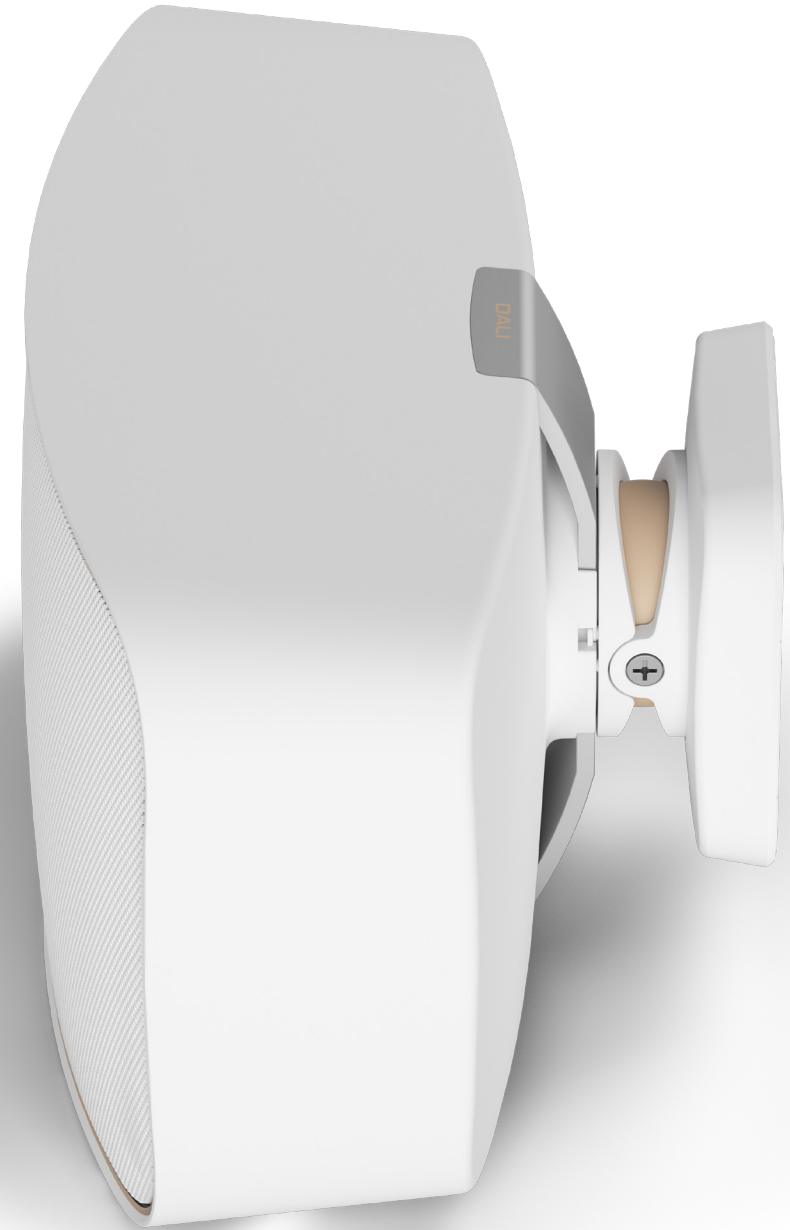
Contents

1.0	Introduction	3
2.0	Safety Precautions	4
3.0	Unpacking	5
4.0	Positioning and Installation	6
4.1	Positioning	7
4.2	Wall Bracket Connection and Installation	8
4.2.1	Wall Mounting Template	8
4.2.2	Pan and Tilt	8
4.2.3	Wall Bracket Connections and Attachment	9
4.2.4	Wall Bracket Cover Attachment	10
4.2.5	Wall Bracket Cover Removal	10
4.2.6	Loudspeaker Attachment	11
4.2.7	Loudspeaker detachment	12
4.2.8	Pan or Tilt Adjustment	13
4.2.9	Bracket Protector Attachment	14
4.2.10	Safety Wire Attachment	15
5.0	Outdoor Loudspeaker Installation	16
6.0	Running In	17
7.0	Cleaning	17
8.0	Disposal	17
9.0	Technical Specifications	18

1.0 Introduction

Congratulations on your new DALI GARDIAN OW 6 outdoor wall mount loudspeakers. The DALI GARDIAN OW 6 is designed to be used where high-quality audio is required in outdoor locations throughout the year. The GARDIAN OW 6 is rated to IP67 for dust and water ingress and suitable for use in temperatures between -20°C and +70°C. It includes a Click n' Connect mounting and connection bracket that enables landscape or portrait orientation and incorporates simple pan or tilt alignment options.

In order to get the most from your DALI GARDIAN OW 6, please read this manual carefully before you unpack and install the loudspeakers. You can find more information on our website: www.dali-speakers.com or by contacting your authorised DALI retailer.





2.0 Safety Precautions

- Always follow the safety precautions.
- GARDIAN OW 6 loudspeakers should be installed by competent professional audio installation technicians.
- Always ensure that GARDIAN OW 6 loudspeakers are only attached to structures that are easily able to support their weight.
- Ensure that there are no service installations such as electrical or data cables, gas or water pipes, or ventilation ducts present in the structure at the GARDIAN OW 6 mounting location.
- Ensure that the driving amplifier is switched off when connecting cables to GARDIAN OW 6 loudspeakers.
- If more than one DALI GARDIAN OW 6 are connected in parallel to the same amplifier output channel, you should refer to your amplifier's technical specifications to ensure that the amplifier can handle the load. If further assistance is needed, please contact your authorized DALI retailer or installer.
- Extended use of loudspeakers at high volume levels may cause hearing damage. Do not raise the volume beyond comfortable levels.
- GARDIAN OW 6 loudspeakers are intended to be mounted in a maximum height of 2 metres / 78.7 inches. Mounting higher than 2 metres requires a safety wire to be attached to the loudspeaker. See Section 4.2.10



3.0 Unpacking

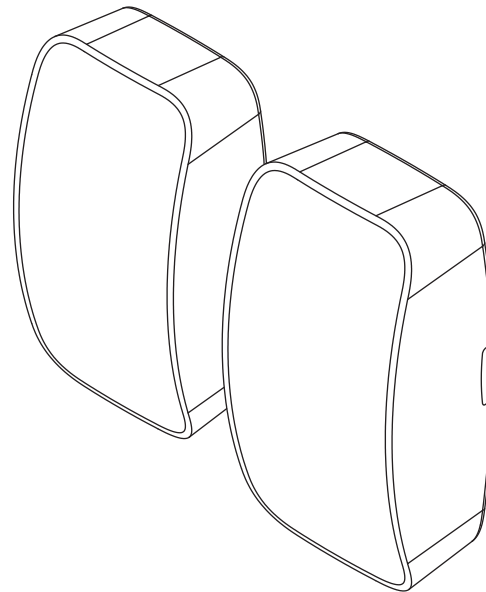
Take care not to damage the box contents when unpacking the GARDIAN OW 6.

Once unpacking is complete, check that all components listed and illustrated in Diagram 1 are present.

We recommend that packaging materials are retained in case the GARDIAN OW 6 requires relocation. If, however, the packaging materials are to be discarded, please ensure they are disposed of responsibly and recycled where possible.

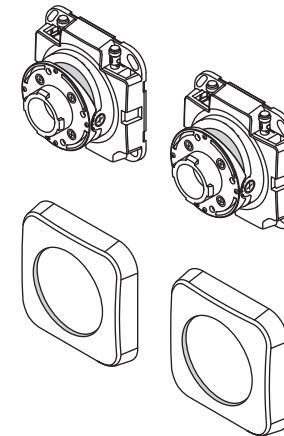
DIAGRAM 1: GARDIAN OW 6 PACK CONTENTS

2 × DALI GARDIAN OW 6

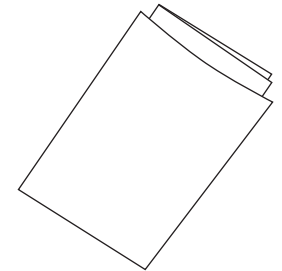


2 × Wall Bracket

2 × Wall Bracket Cover



1 × Document Pack



4.0 Positioning and Installation

The GARDIAN OW 6 is a passive wall mount loudspeaker intended for outdoor or high-humidity indoor use. It offers waterproof and dust-proof IP67 rated performance and can be used in temperatures from -20°C to +70°C.

The GARDIAN OW 6 is supplied with a Click n' Connect Wall Bracket that incorporates loudspeaker connection facilities. The amplifier connection terminals are located within the bracket and the loudspeaker connects automatically when clicked in place.

The GARDIAN OW 6 Wall Bracket enables pan or tilt adjustment so loudspeakers that are mounted above or to the side of the listening area can be angled to direct their output as required. The Wall Bracket can also accommodate portrait or landscape loudspeaker installation options and, due to its concentrically arranged drivers, GARDIAN OW 6 dispersion characteristics remain consistent in either orientation. This significantly enhances the installation versatility of the GARDIAN OW 6.

GARDIAN OW 6 mounting locations should be chosen appropriately for the environment and installation type.

The following paragraphs describe general GARDIAN OW 6 positioning guidelines. Use of the GARDIAN OW 6 wall bracket is illustrated and described in Section 4.2 onwards.

Stereo Installations

Stereo installations should generally follow conventional guidelines with a pair of loudspeakers located at two apex points of an equilateral triangle that includes the primary listening area at its third apex. If the speakers are located significantly above the listening position they may be tilted downwards. The wide dispersion of the GARDIAN OW 6 means there is no need for “toe-in” the speakers towards the central listening area.

Background Sound Installations

For distributed background sound applications, GARDIAN OW 6 mounting locations should be spaced to ensure consistent coverage over the required area. If the speakers are located significantly above the listening position they may be tilted downwards. Background sound loudspeakers are best fed with mono audio rather than stereo.

! As with any passive loudspeaker, DALI GARDIAN OW 6 locations close to corners will result in bass emphasis. Amplifier EQ facilities may be used to compensate for corner mount low frequency emphasis.

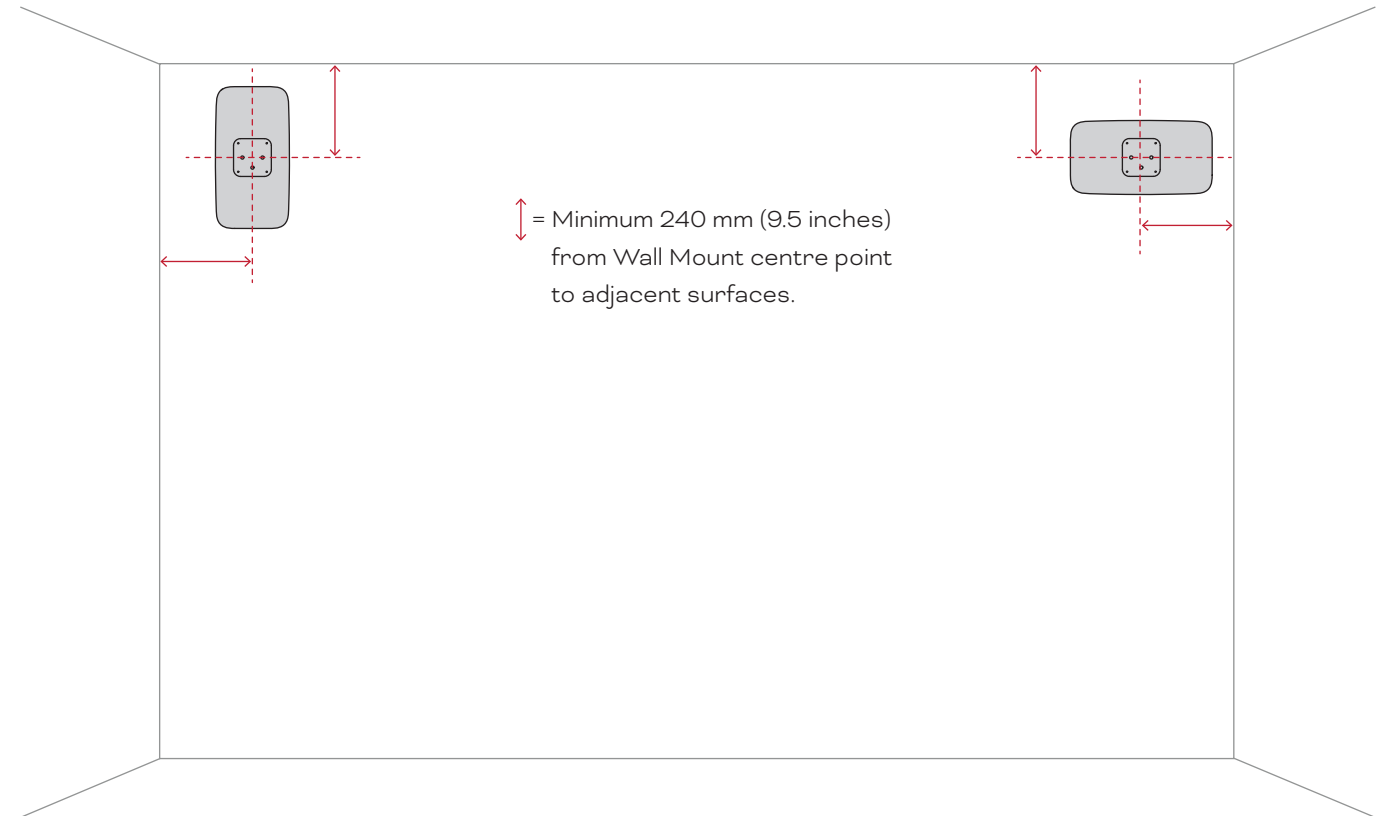


4.1 Positioning

In order to click-fit GARDIAN OW 6 loudspeakers to wall mount brackets they must be mounted a minimum distance away from side walls or ceilings. The minimum distance is shown in Diagram 2.

For correct mounting, please use the included Wall Mounting Template located in the box.

DIAGRAM 2: GARDIAN OW 6 MOUNTING CLEARANCE



4.2 Wall Bracket Connection and Installation

4.2.3 Wall Bracket Connections and Attachment

With the wall bracket cover removed, connect the amplifier to the GARDIAN OW 6 Wall Bracket spring terminals using appropriate loudspeaker cable. Connect the amplifier positive terminal (+) to the Wall Bracket positive terminal (red) and the amplifier negative terminal (–) to the Wall Bracket negative terminal (black). Always use high-quality low resistance loudspeaker cable. Loudspeaker cable connections are illustrated in Diagram 5.

! Ensure that the amplifier is switched off while loudspeaker cable connections are being made.

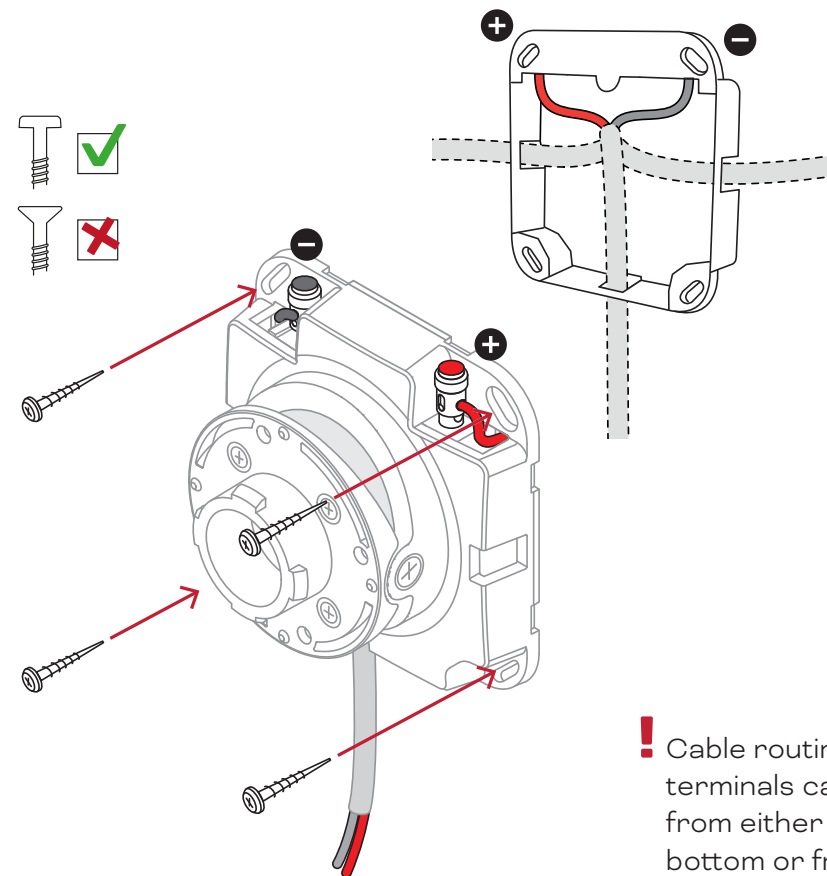
Attach the GARDIAN OW 6 Wall Bracket to the wall or other structure using four screws and the appropriate wall fittings if required. Always ensure that the structure to which GARDIAN OW 6 loudspeakers and wall brackets are attached is easily able to support their weight.

! If you have any doubts over your ability to attach GARDIAN OW 6 wall brackets securely you should seek qualified professional assistance.

! To avoid damage to the wall bracket during attachment, it is recommended to use round head, flat bottom screws. Countersunk screws (with a conical bottom) may damage the bracket holes.

Wall Bracket connection and attachment is illustrated in Diagram 6.

DIAGRAM 5: GARDIAN OW 6 WALL BRACKET ATTACHMENT AND CONNECTIONS



! Cable routing to the terminals can be done from either side, from the bottom or from behind



4.2 Wall Bracket Connection and Installation

4.2.4 Wall Bracket Cover Attachment

Once a Wall Bracket is connected and securely fixed to a wall, its cover can be re-attached. Push the cover until it click-fits in place.

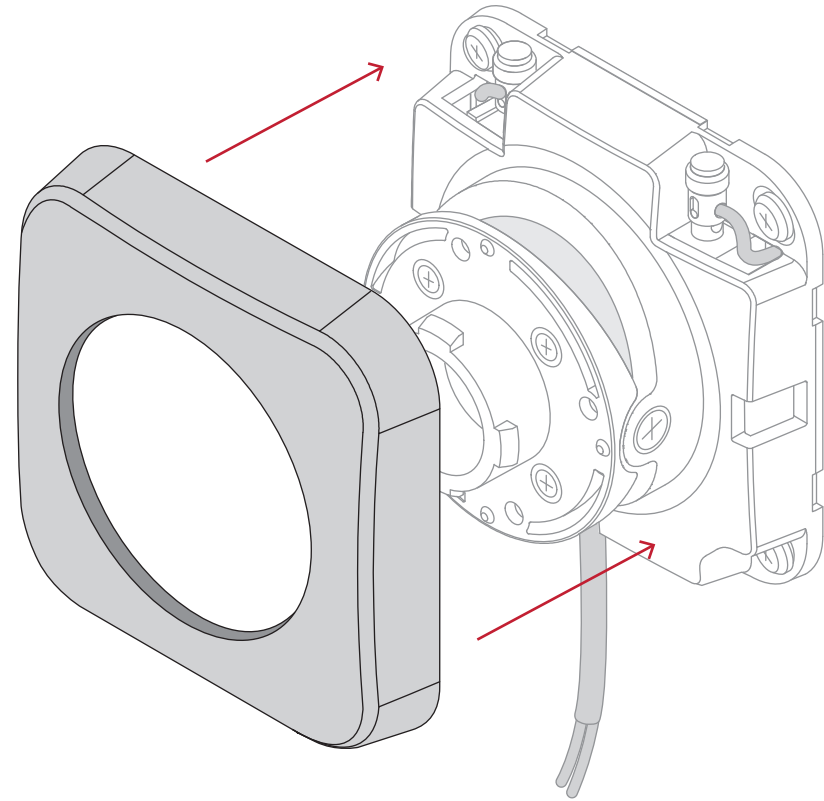
Wall Bracket cover attachment is illustrated in Diagram 6.

4.2.5 Wall Bracket Cover Removal

To regain access to Wall Bracket connection terminals and fixing holes, the bracket cover must be removed. Simply grip the cover and pull it away from the wall bracket body.

A flatheaded screwdriver can be useful in helping to remove the cover.

DIAGRAM 6: GARDIAN OW 6 WALL BRACKET COVER REPLACEMENT



4.2 Wall Bracket Connection and Installation

4.2.6 Loudspeaker Attachment

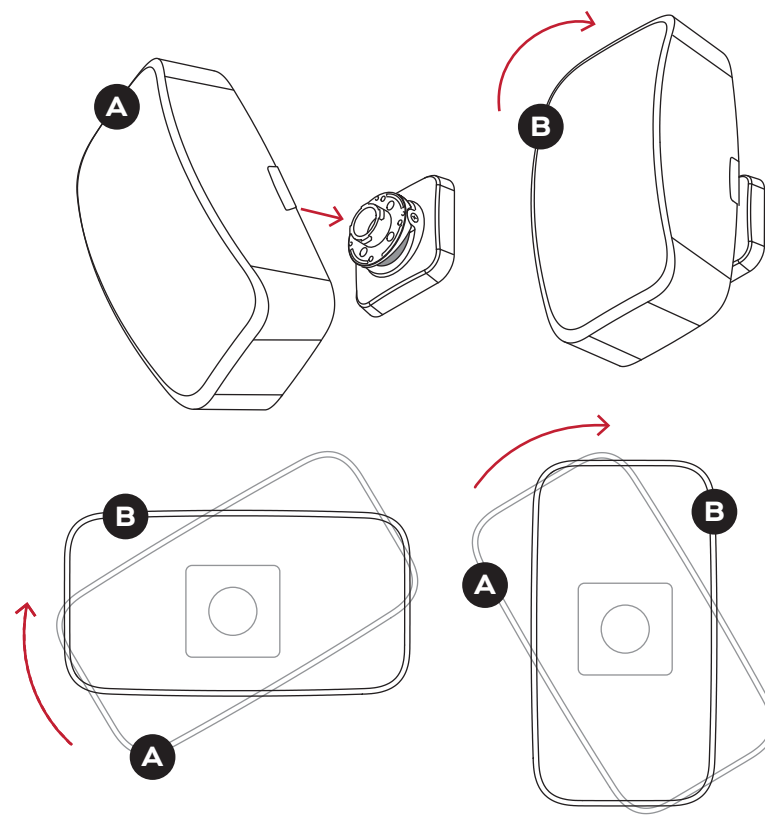
Once a Wall Bracket is connected to an amplifier, securely fixed in place, and has its bracket cover replaced, a GARDIAN OW 6 loudspeaker can be attached. The attachment procedure for landscape or portrait loudspeaker orientation is the same.

To attach a loudspeaker, present it to the bracket at a rotational angle of approximately 20° **A** and insert the loudspeaker post into the wall bracket aperture. When the post is fully inserted, rotate the loudspeaker clockwise towards the perpendicular **B**. The loudspeaker will Click n' Connect into place as it reaches the perpendicular.

The GARDIAN OW 6 loudspeaker attachment procedure is illustrated in Diagram 7.

! If GARDIAN OW 6 brackets are to be left without loudspeakers attached for any length of time, Bracket Protectors should be fitted. Bracket Protectors are available from DALI retailers and distributors. Section 4.2.9 describes the use of Bracket Protectors.

DIAGRAM 7: GARDIAN OW 6 CLICK N' CONNECT LOUDSPEAKER ATTACHMENT



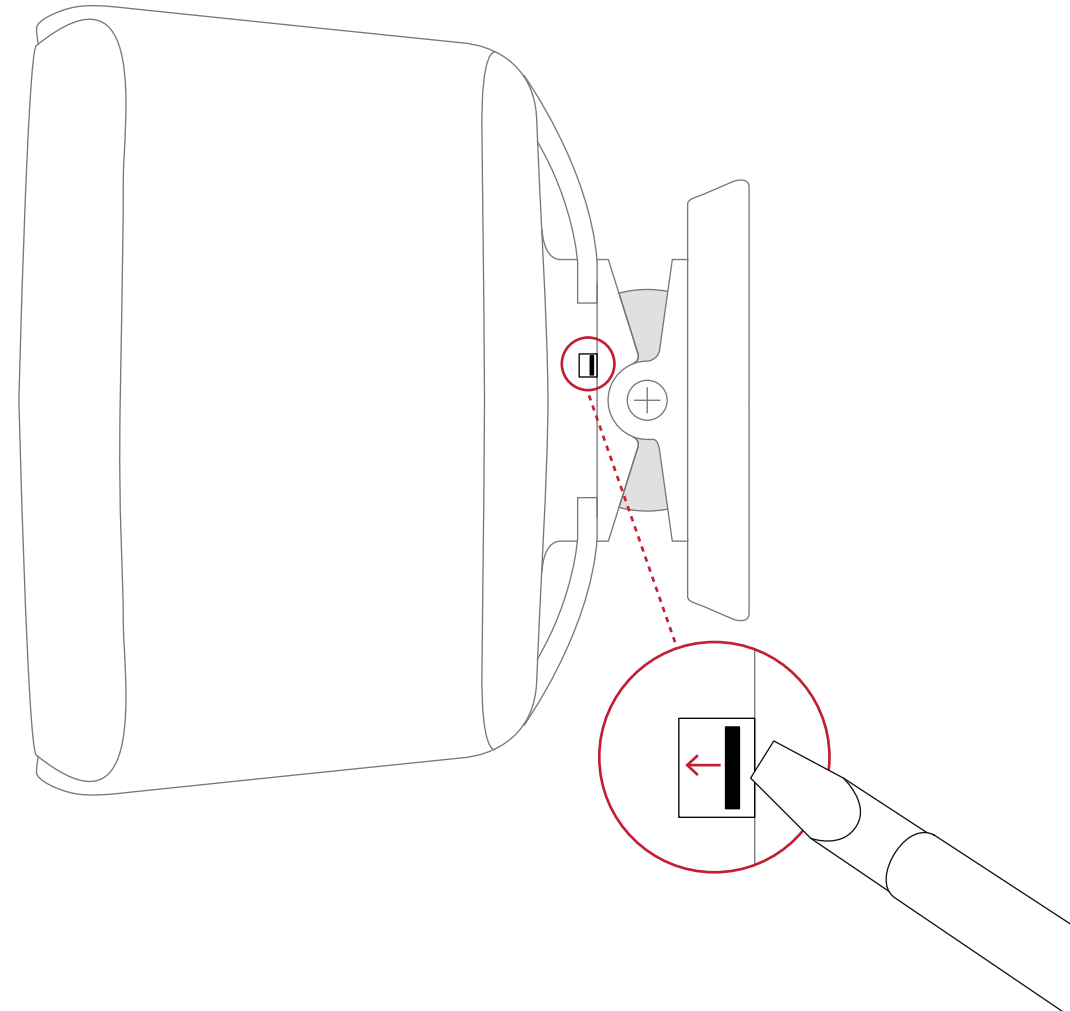
4.2 Wall Bracket Connection and Installation

4.2.7 Loudspeaker detachment

Detaching a GARDIAN OW 6 from its bracket is the reverse procedure of attachment. Use a flathead screwdriver to push the small unlocking pin behind the speaker and rotate the loudspeaker approximately 20° anti-clockwise and retract it from the bracket post.

The GARDIAN OW 6 loudspeaker detachment procedure is illustrated in Diagram 8.

DIAGRAM 8: GARDIAN OW 6 DETACHMENT FROM BRACKET POST



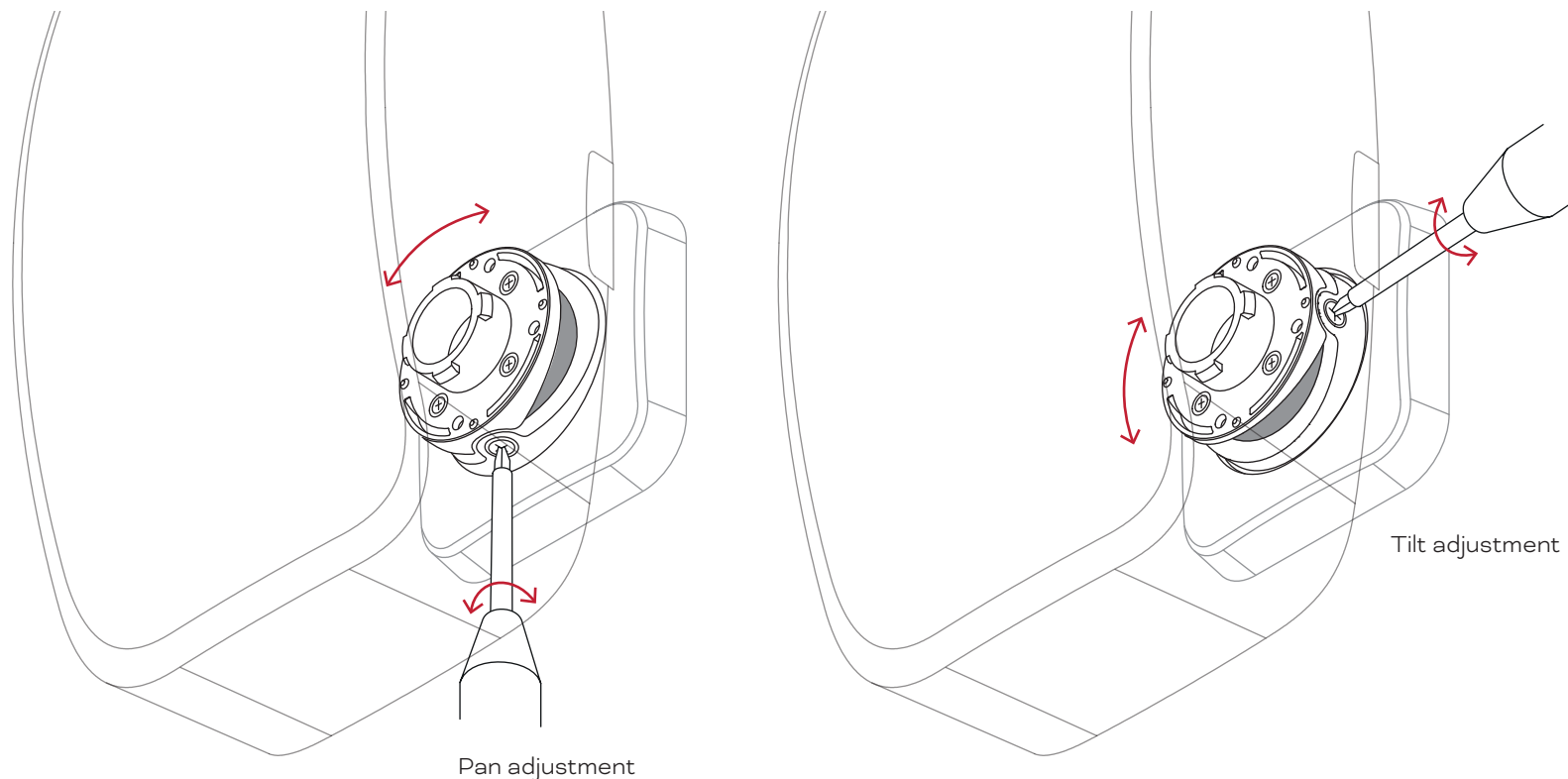
4.2 Wall Bracket Connection and Installation

4.2.8 Pan or Tilt Adjustment

With the GARDIAN OW 6 loudspeaker securely attached to its Wall Bracket and connected to an amplifier its pan or tilt adjustments can be made. To adjust pan or tilt, simply loosen the crosshead adjustment screw, make the required adjustment, and re-tighten the screw.

Pan and tilt adjustment is illustrated in Diagram 9.

DIAGRAM 9: GARDIAN OW 6 PAN AND TILT ADJUSTMENT



4.2 Wall Bracket Connection and Installation

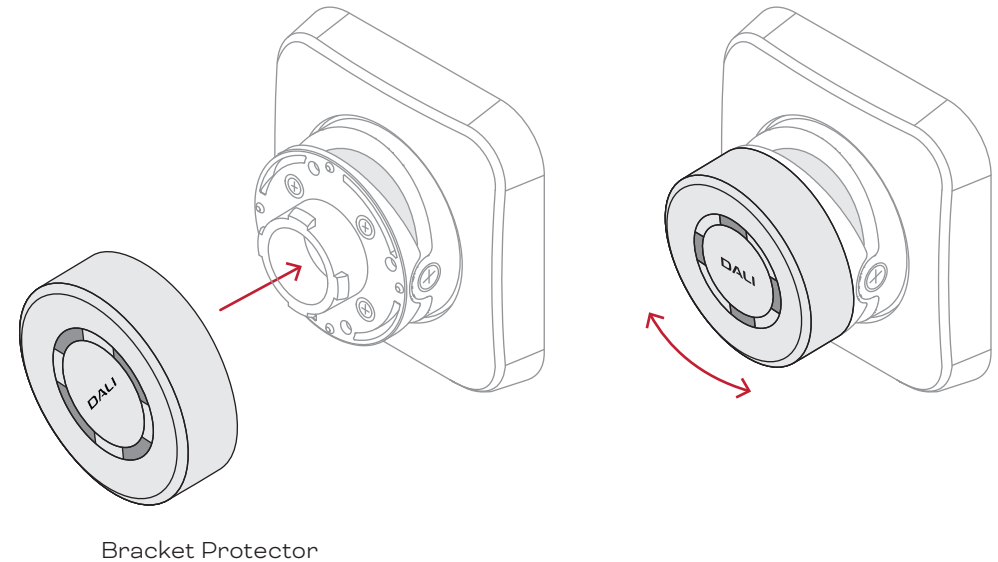
4.2.9 Bracket Protector Attachment

If GARDIAN OW 6 brackets are to be left outdoors without loudspeakers attached for any length of time, Bracket Protectors should be fitted. Bracket Protectors protect the connection components within the bracket from the outdoors environment when no loudspeaker is attached. Bracket Protectors are available from DALI retailers and distributors.

To attach a Bracket Protector simply push it over the bracket post and rotate it 45°.

! The Bracket Protector is sold as an accessory.

DIAGRAM 10: GARDIAN OW 6 BRACKET PROTECTOR ATTACHMENT



4.2 Wall Bracket Connection and Installation

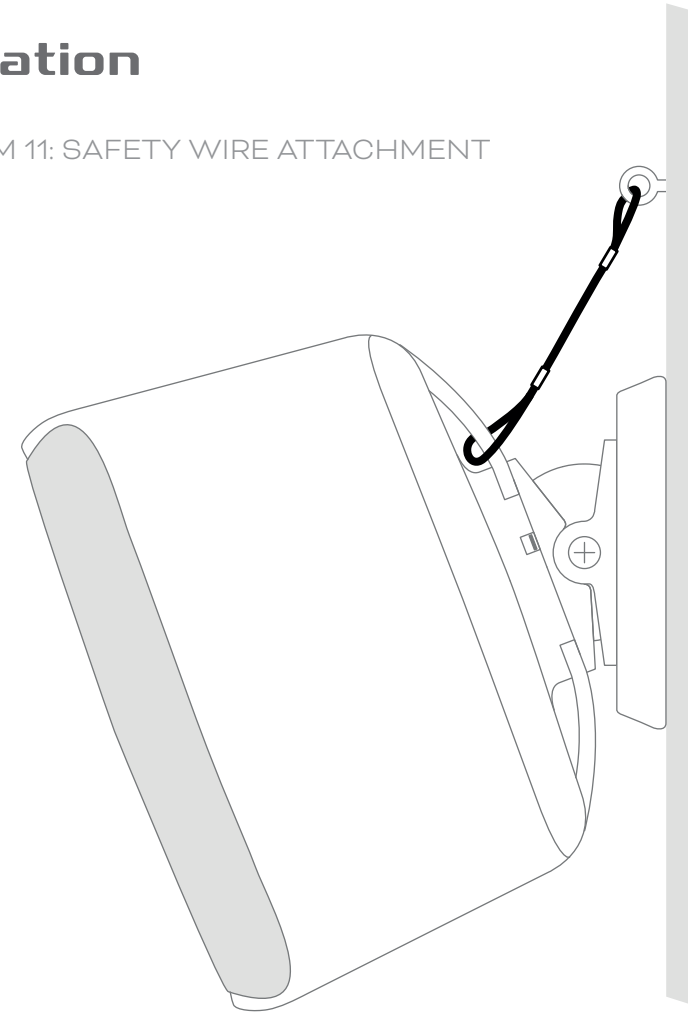
4.2.10 Safety Wire Attachment

GARDIAN OW 6 loudspeakers are intended to be mounted in a maximum height of 2 metres / 78.7 inches. Mounting higher than 2 metres requires a safety wire to be attached to the loudspeaker.

Diagram 11 shows how to attach the safety wire.

Always ensure that GARDIAN OW 6 loudspeakers are only attached to structures that are easily able to support their weight.

DIAGRAM 11: SAFETY WIRE ATTACHMENT



5.0 Outdoor Loudspeaker Installation

Outdoor loudspeaker installations can cover a wide variety of contexts. From general audio coverage in an outdoor deck area for example, to a pool area, around a barbecue, in a garage, or maybe even for multi-channel audio duties in a semi-enclosed home theatre.

The GARDIAN OW 6 offers all the versatility required to mould itself to suit the mounting assets available and enable every outdoor installation to be optimised - even in the typical outdoor context of irregular and perhaps ill-suited mounting structures and surfaces. The images on this page illustrate a few of the possibilities.



6.0 Running In

Like any mechanical system, a loudspeaker requires a “running-in” period to perform at its best. You will experience a gradual increase in sound quality during the first period of use. The break-in period will vary depending on use and playback volume. You should expect up to 100 hours of playback until maximum performance is reached. Unlike other mechanical systems, the life span of a loudspeaker is increased by normal, regular playback of music.

7.0 Cleaning

Thanks to its waterproof features, the GARDIAN OW 6 can be washed with water if required. Use a wet cloth or soft brush. Do not remove the loudspeaker grille and avoid using any solvent-based cleaning fluids. Do not use directed water jets or steam cleaners.

Allow the GARDIAN OW 6 to dry naturally. Do not use any directed heat sources.

8.0 Disposal

This product contains electrical or electronic materials. The presence of these materials may, if not disposed of properly, have potential adverse effects on the environment and human health. Presence of this label on the product means it should not be disposed of as unsorted waste and must be collected separately. As a consumer, you are responsible for ensuring that this product is disposed of properly.



9.0 Technical Specifications

GARDIAN	OW 6
Frequency range	47 - 25,000 Hz +/- 3dB
Sensitivity	84 dB @ 1 m for 2.83 V
Nominal impedance	6 Ohm
Maximum SPL	103 dB
Crossover frequency	2,700 Hz
Crossover principle	2-way
Recommended amplifier power	50 - 200 Watt
High frequency driver	1 x 25 mm soft dome (Coaxially mounted)
High frequency diaphragm	Soft woven fabric
Low/Mid frequency driver	1 x 5 inch
Low/Mid frequency diaphragm	Polypropylene
Connection input	Single wire
Enclosure type	Tuned Mass Enclosure 2 x 5 inch (oval) passive radiators
Other features	Click n' Connect wall bracket
Installation location	On-Wall / On-Ceiling
Recommended placement	Ceiling / Front / Centre / Surround
IP rating	IP 67
Outer dimensions incl. grille (H x W x D)	200 x 372 x 206 mm / 7.87 x 14.65 x 8.11 inches
Weight incl. grille	4.08 kg / 9 lbs
Shipping weight (pair)	10.4 kg / 22.92 lbs
Finish	White / Black
Included accessories	Wall Mounting Template
Optional accessories	Wall Bracket Cover
All technical specifications are subject to change without notice.	

